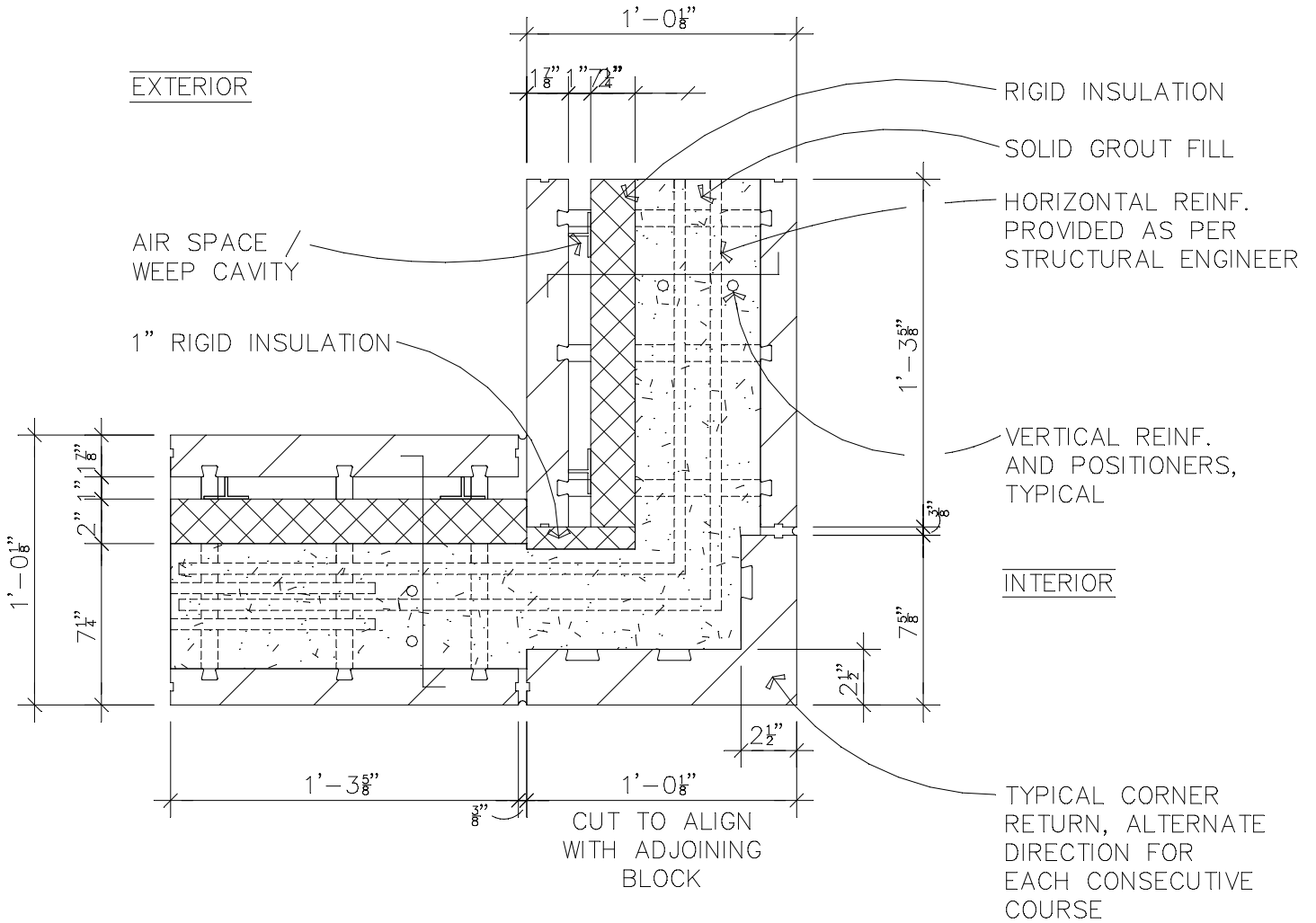


OUTSIDE CORNER PLAN DETAIL

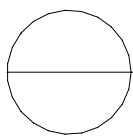
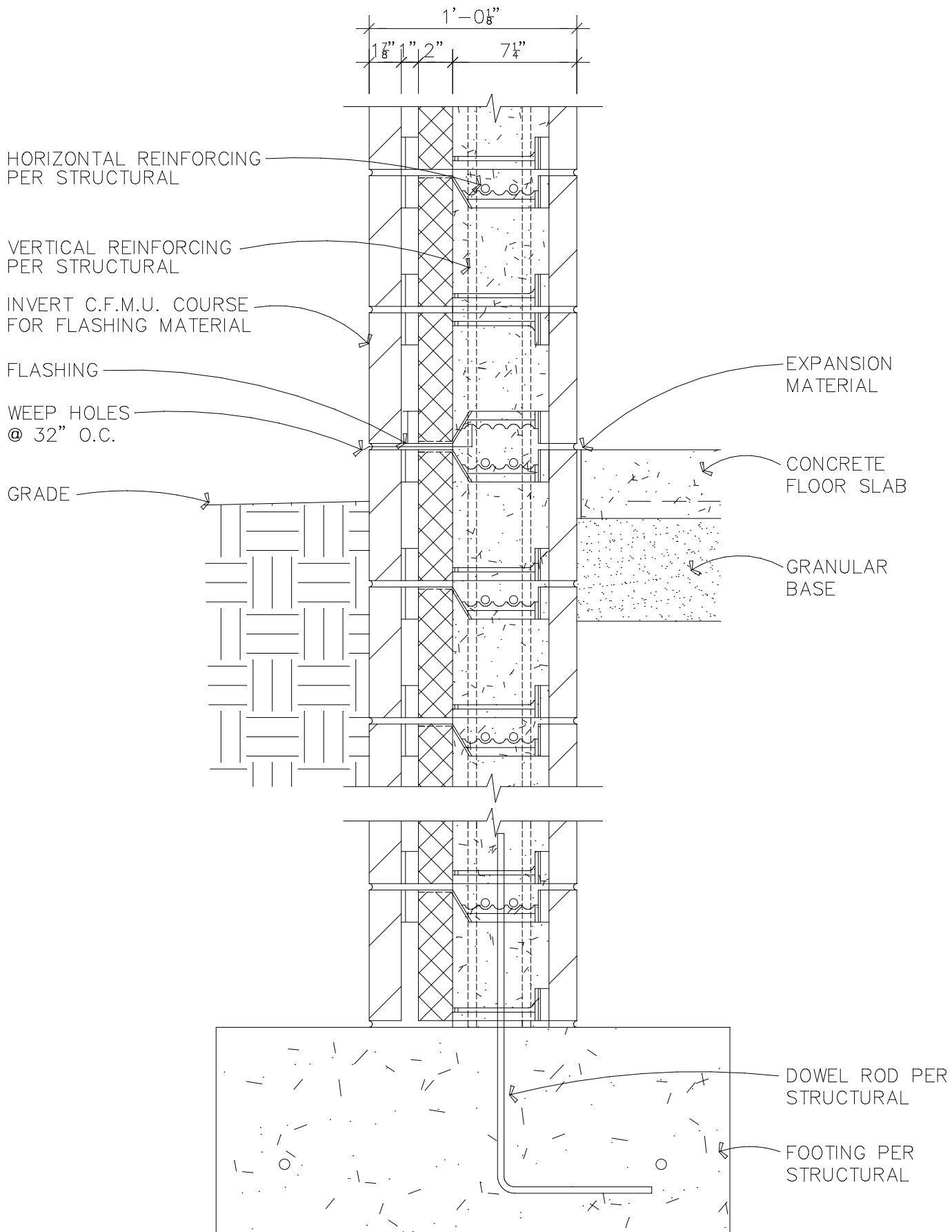
1 1/2" = 1'-0"

Ref. 001 Rev. 021402



○ INSIDE CORNER PLAN DETAIL
 1 1/2" = 1'-0"

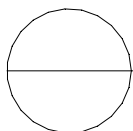
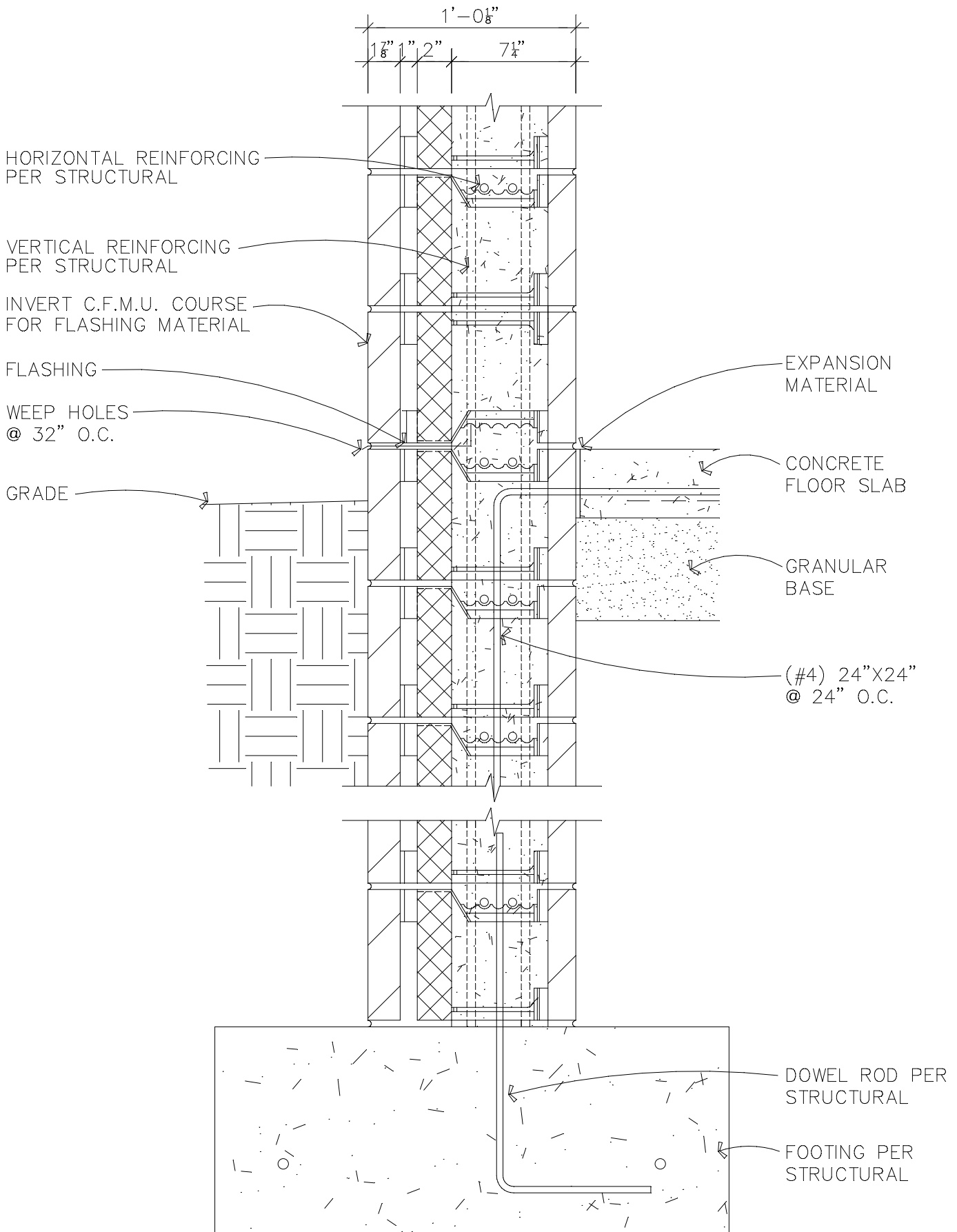
Ref. 002 Rev. 021402



FLOATING SLAB DETAIL

1 1/2" = 1'-0"

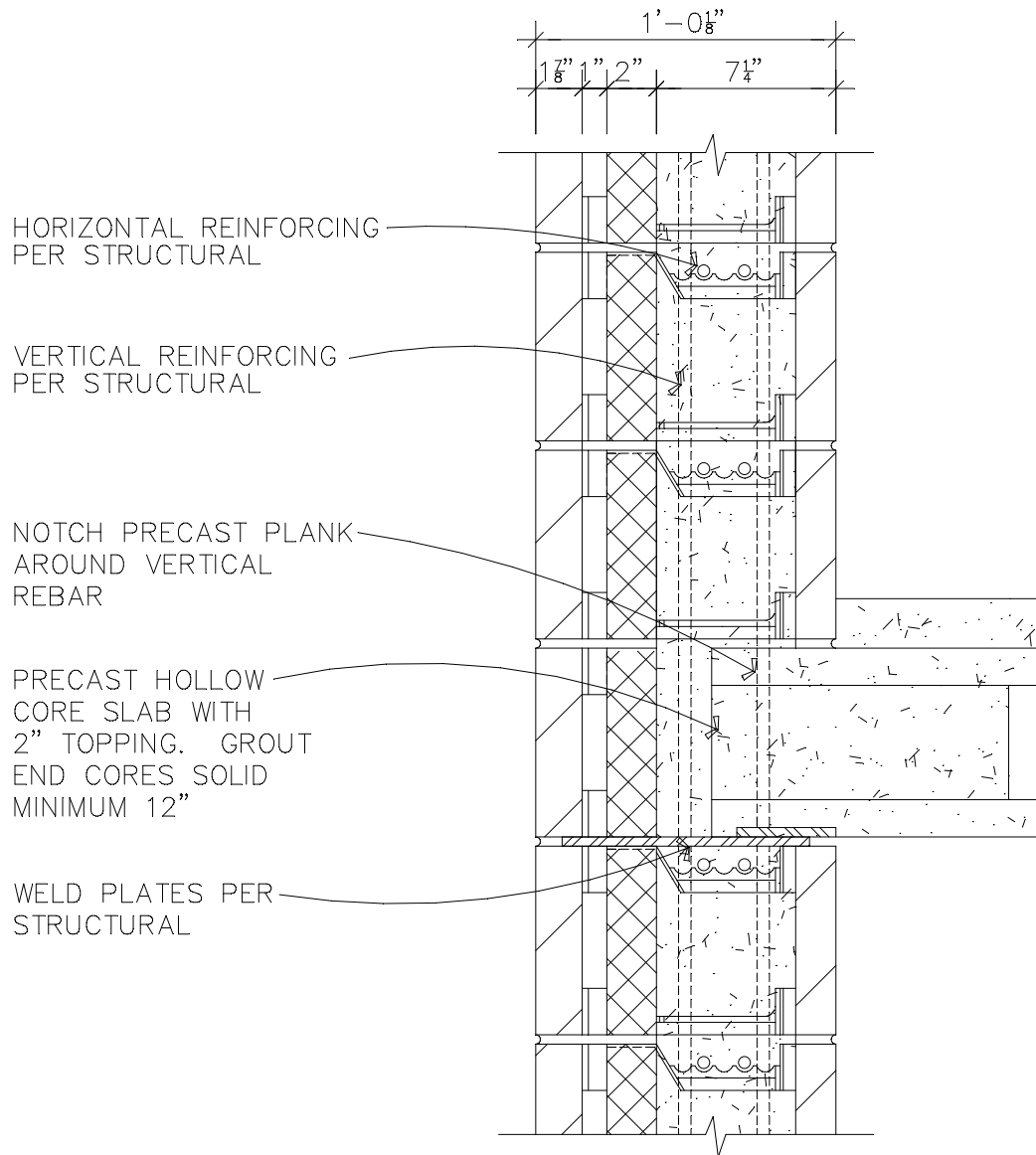
Ref. 003 Rev. 021402



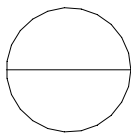
STRUCTURALLY CONNECTED SLAB DETAIL

1 1/2" = 1'-0"

Ref. 004 Rev. 021402

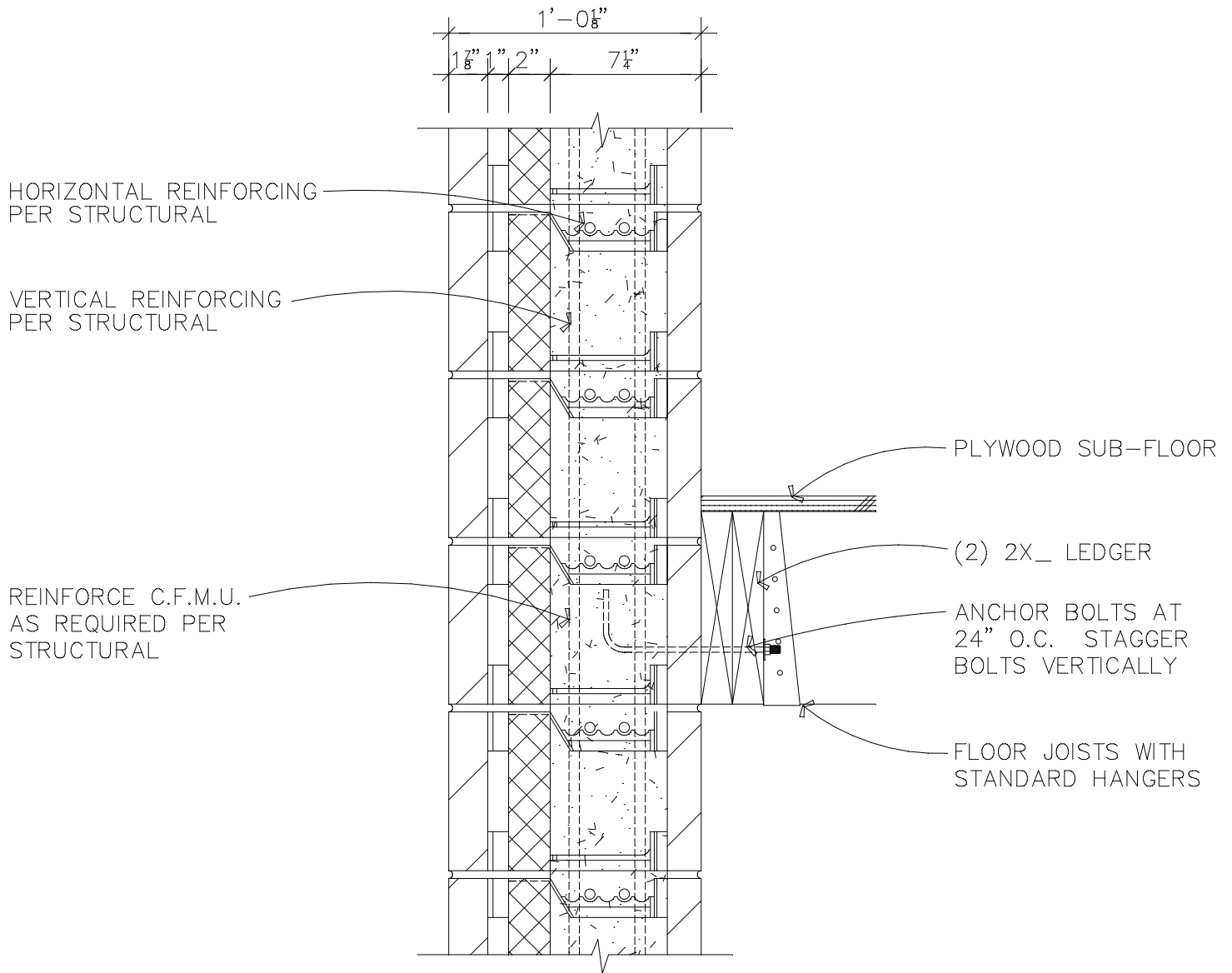


INTERMEDIATE FLOOR OR ROOF DECK CONNECTION — PRECAST CONCRETE

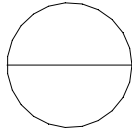


1 1/2"=1'-0"

Ref. 005 Rev. 021402

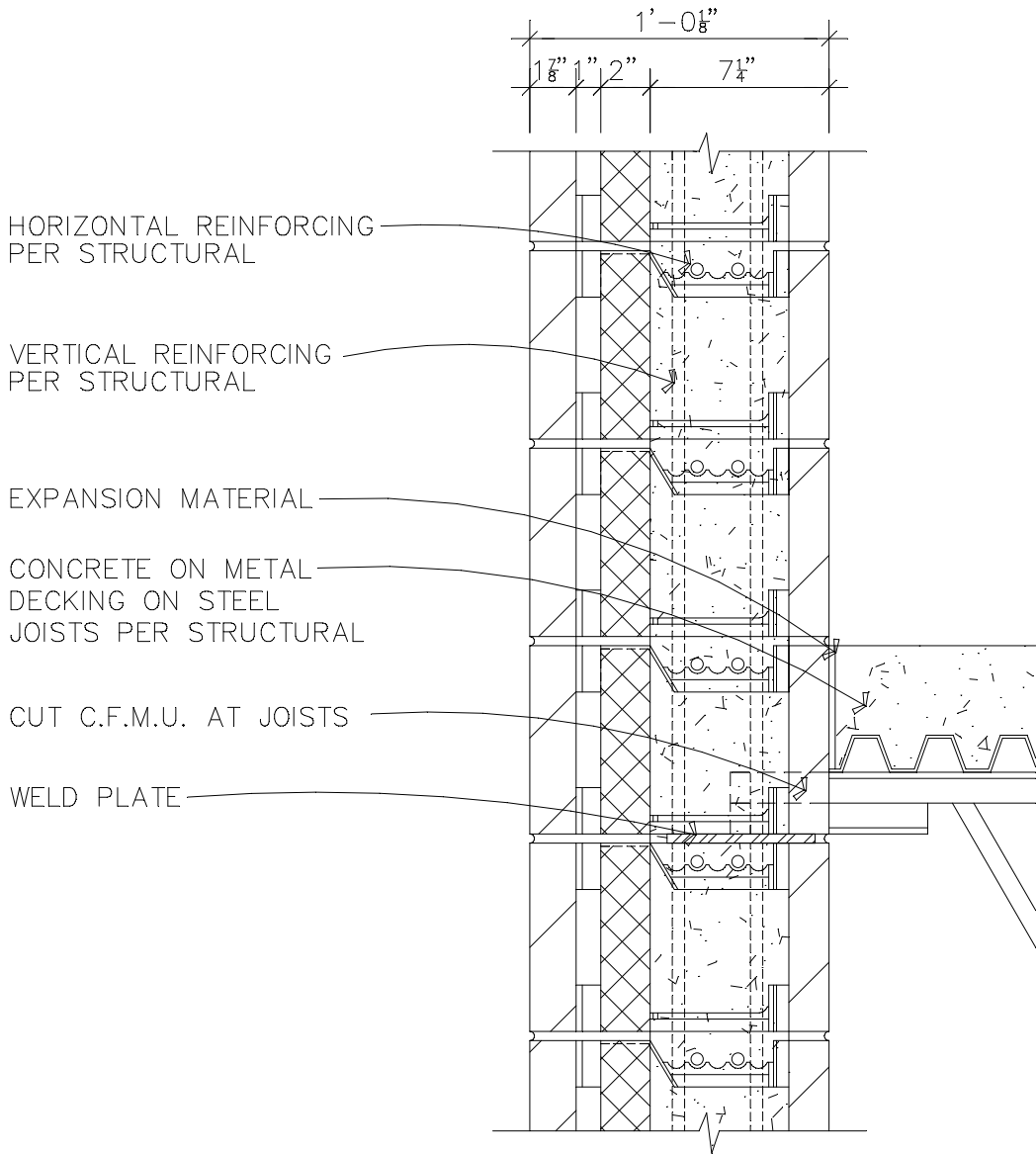


INTERMEDIATE FLOOR OR ROOF DECK
 CONNECTION — WOOD FLOOR

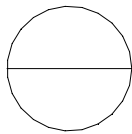


1 1/2" = 1'-0"

Ref. 006 Rev. 021402

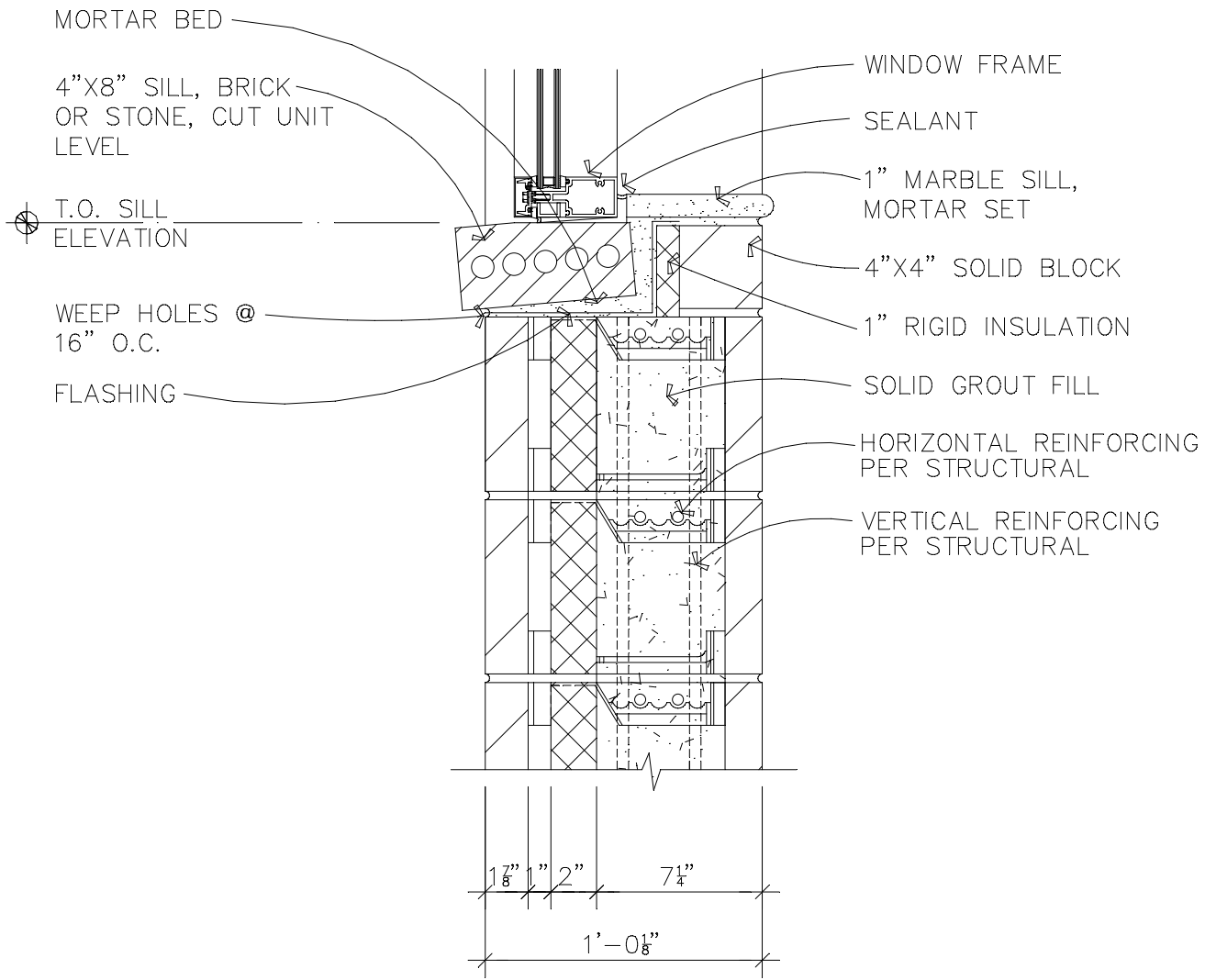


INTERMEDIATE FLOOR OR ROOF DECK
 CONNECTION — STEEL JOIST

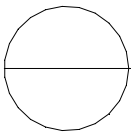


1 1/2" = 1'-0"

Ref. 007 Rev. 021402

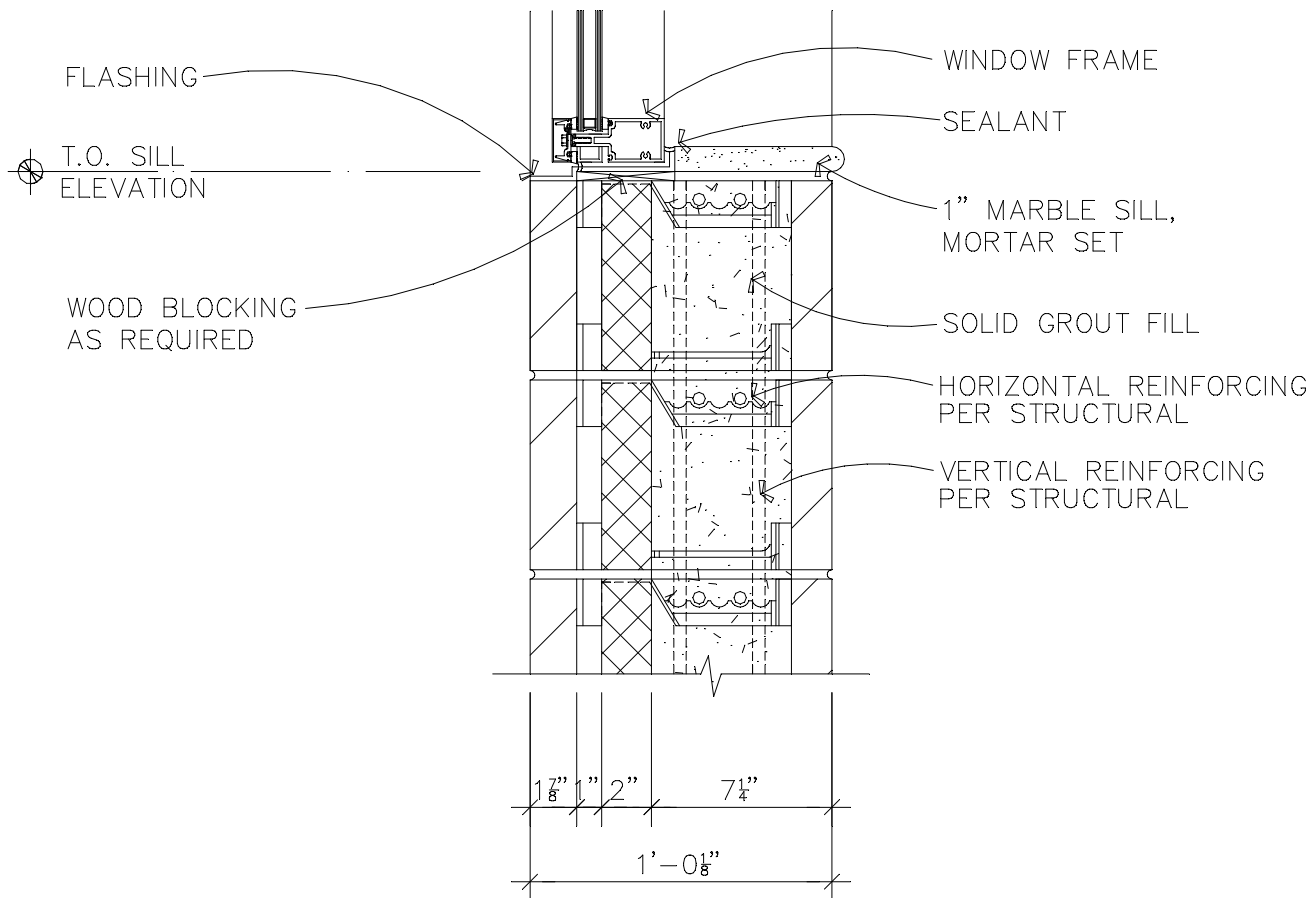


WINDOW SILL WITH BRICK STYLE
 ROW-LOCK EXTERIOR SILL AND
 STONE INTERIOR SILL

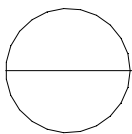


1 1/2"=1'-0"

Ref. 008 Rev. 021402

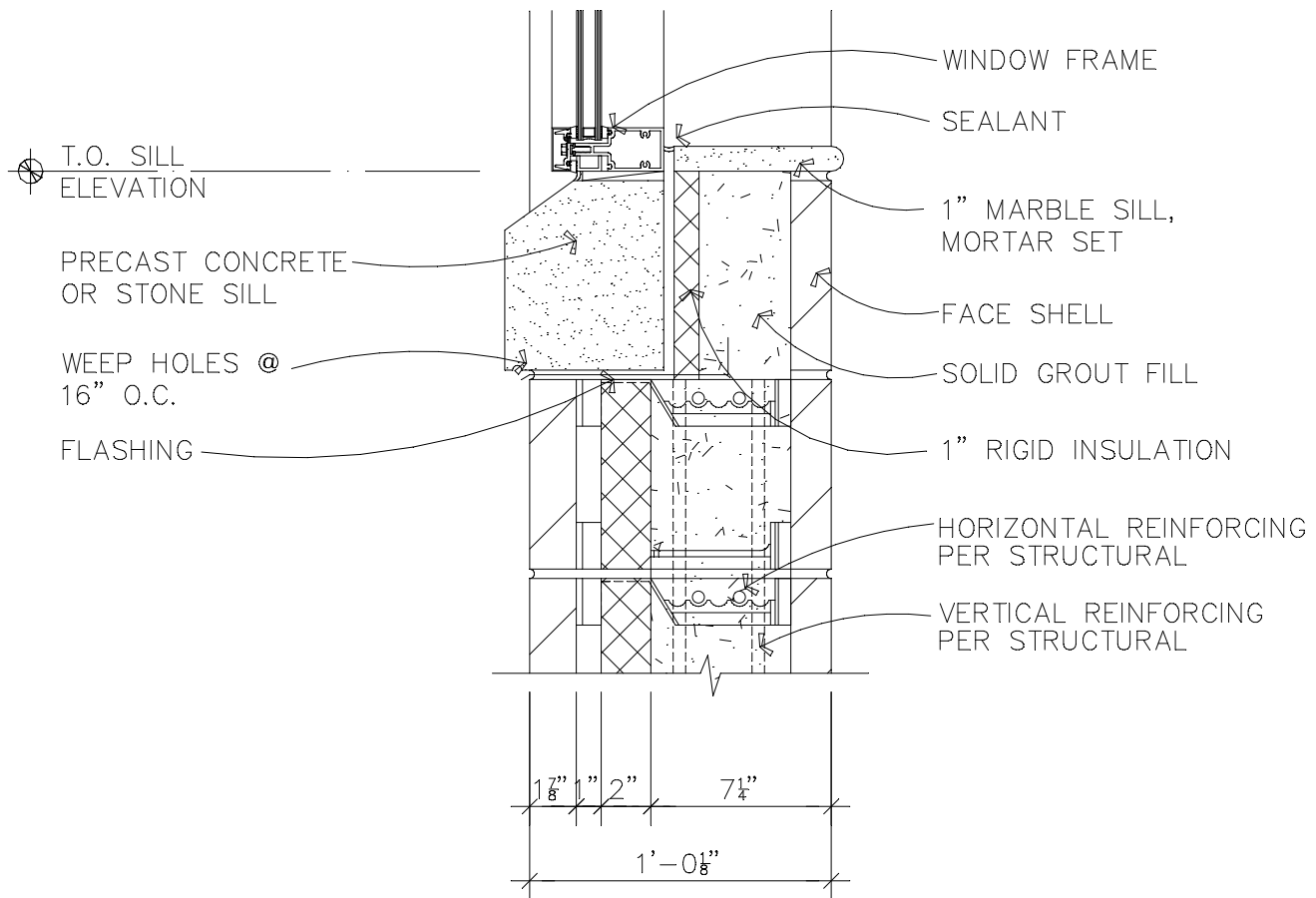


WINDOW SILL WITH STONE INTERIOR
 FLUSH MOUNTED CASING OVER
 FLASHING FOR EXTERIOR

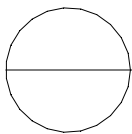


1 1/2" = 1'-0"

Ref. 009 Rev. 021402

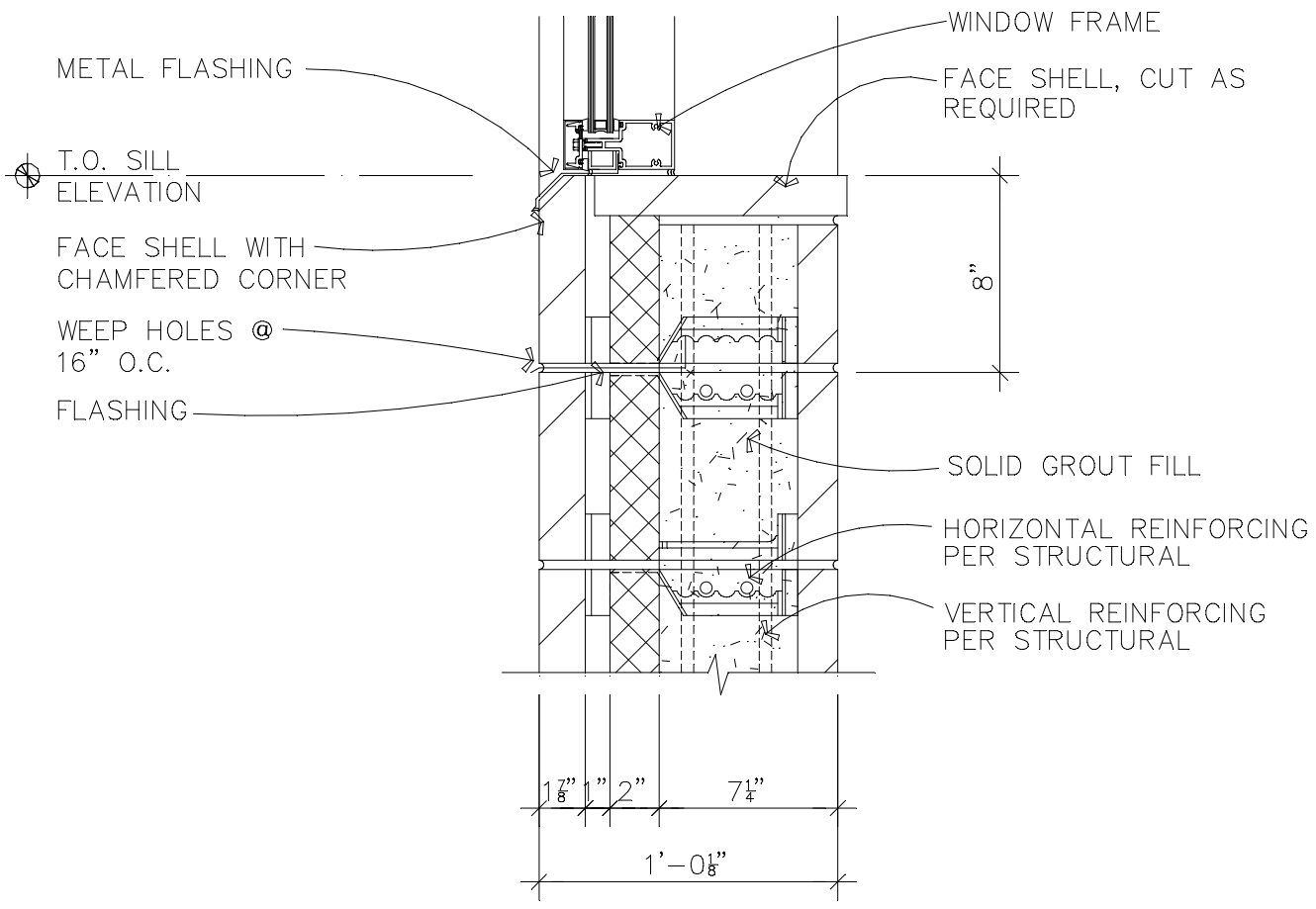


WINDOW SILL WITH PRECAST CONCRETE OF STONE

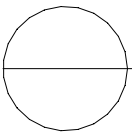


1 1/2" = 1'-0"

Ref. 010 Rev. 021402

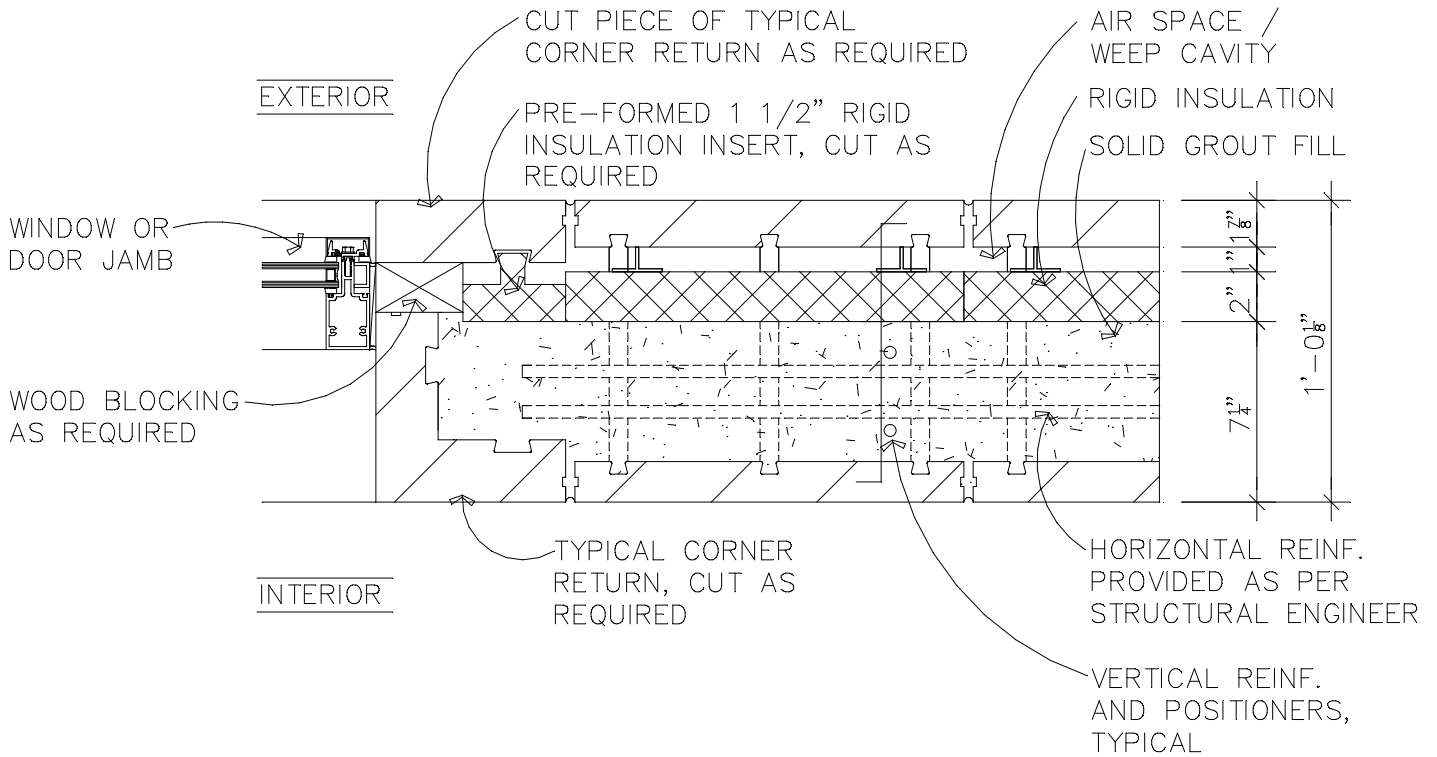
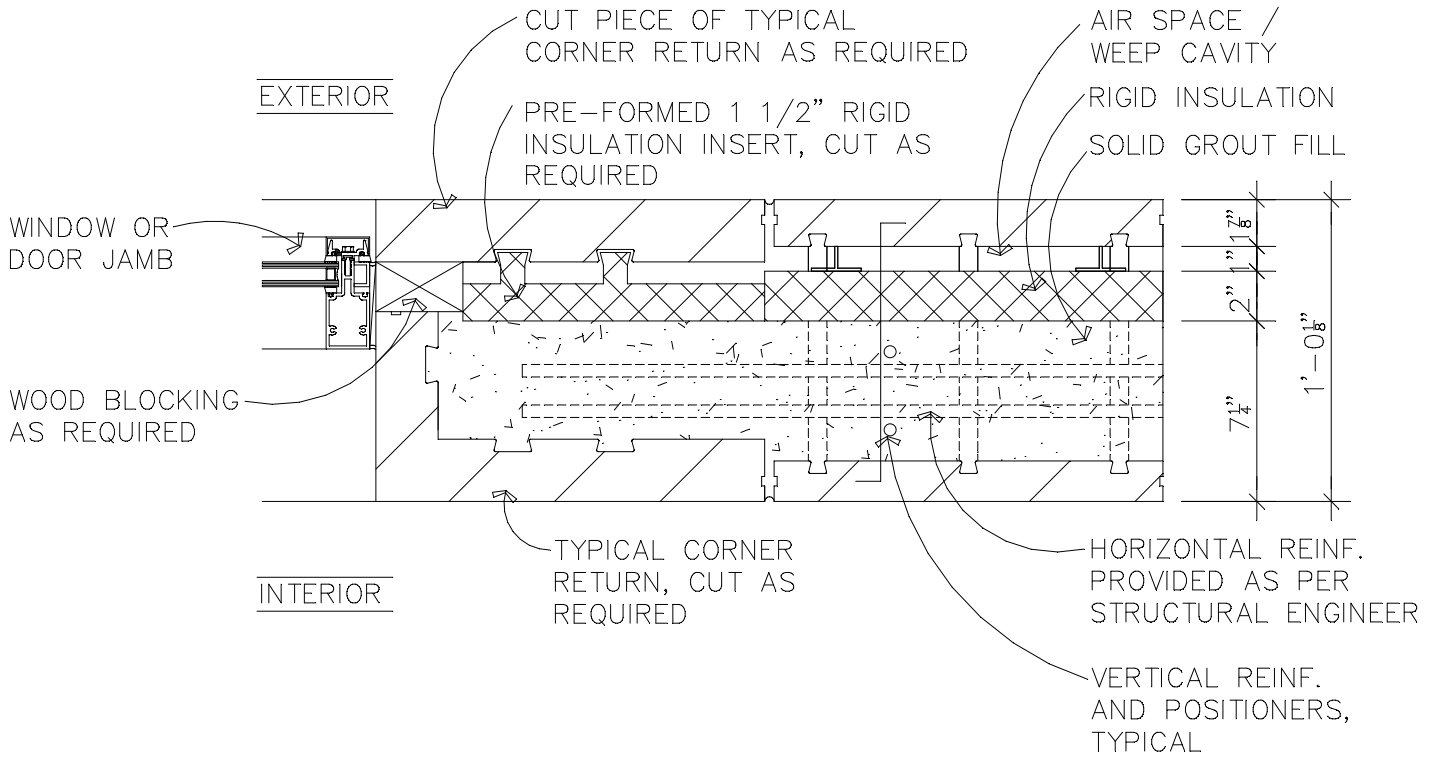


WINDOW SILL WITH CFMU INTERIOR
 FLUSH MOUNTED CASING OVER
 FLASHING FOR EXTERIOR

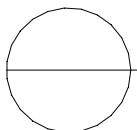


1 1/2" = 1'-0"

Ref. 011 Rev. 021402

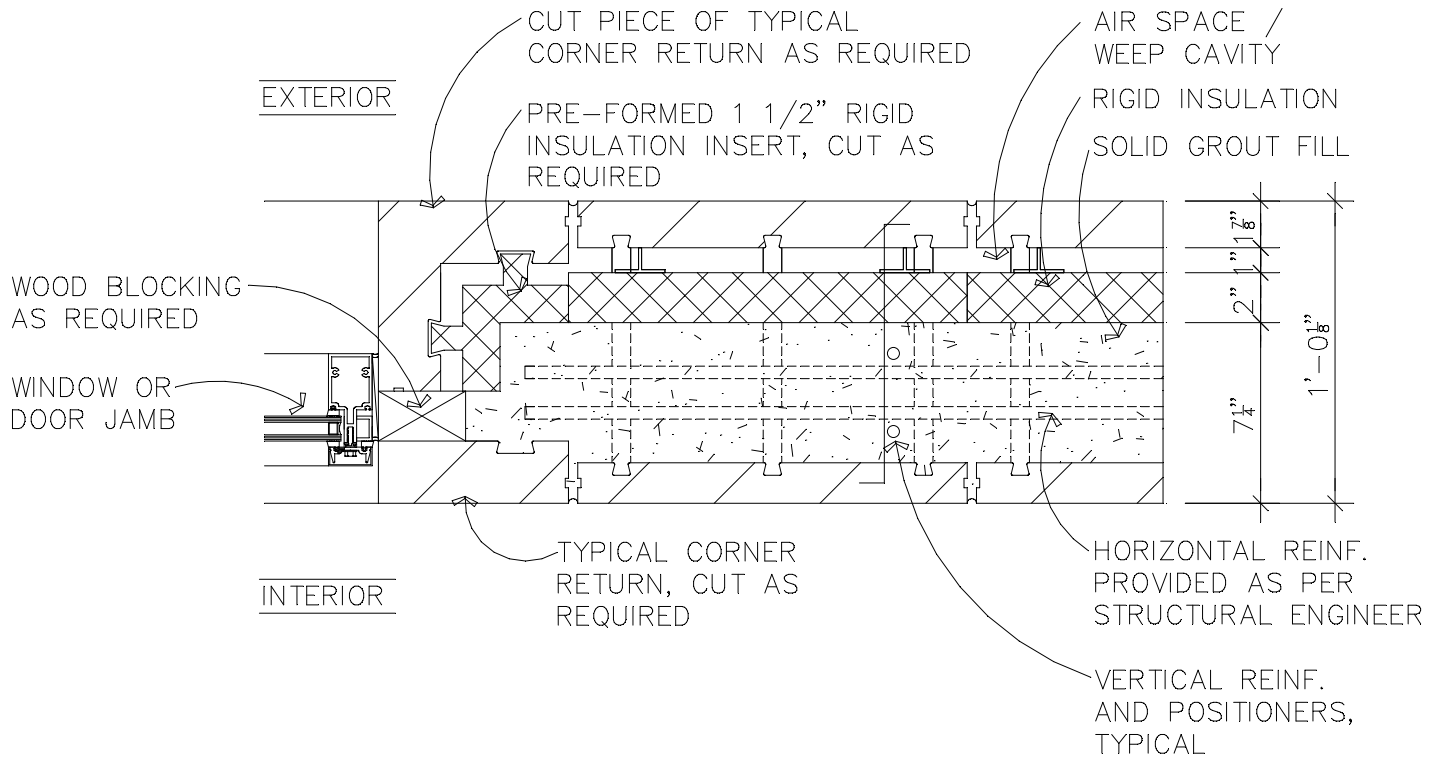
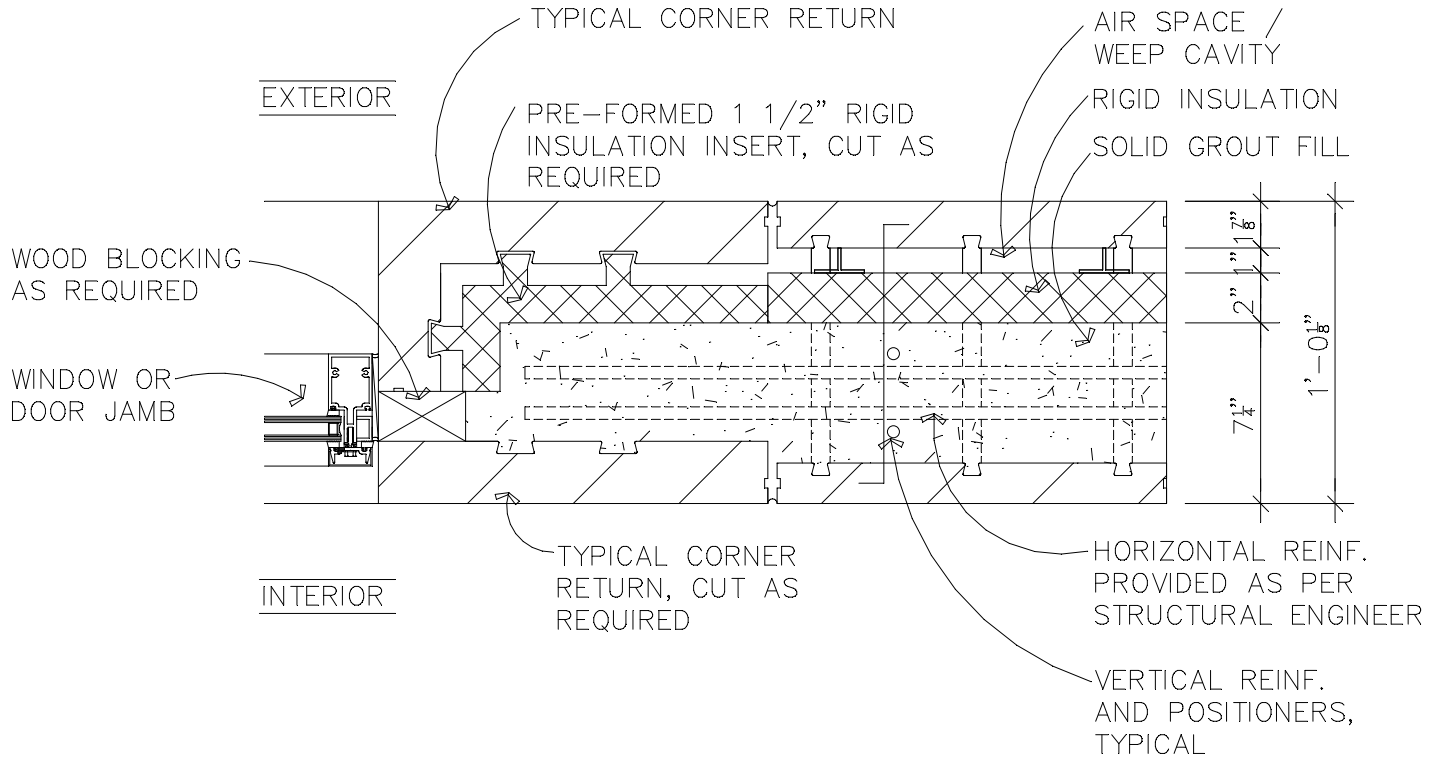


JAMB DETAIL SHOWING
TYPICAL CORNER RETURN

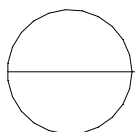


1 1/2" = 1'-0"

Ref. 012 Rev. 021402

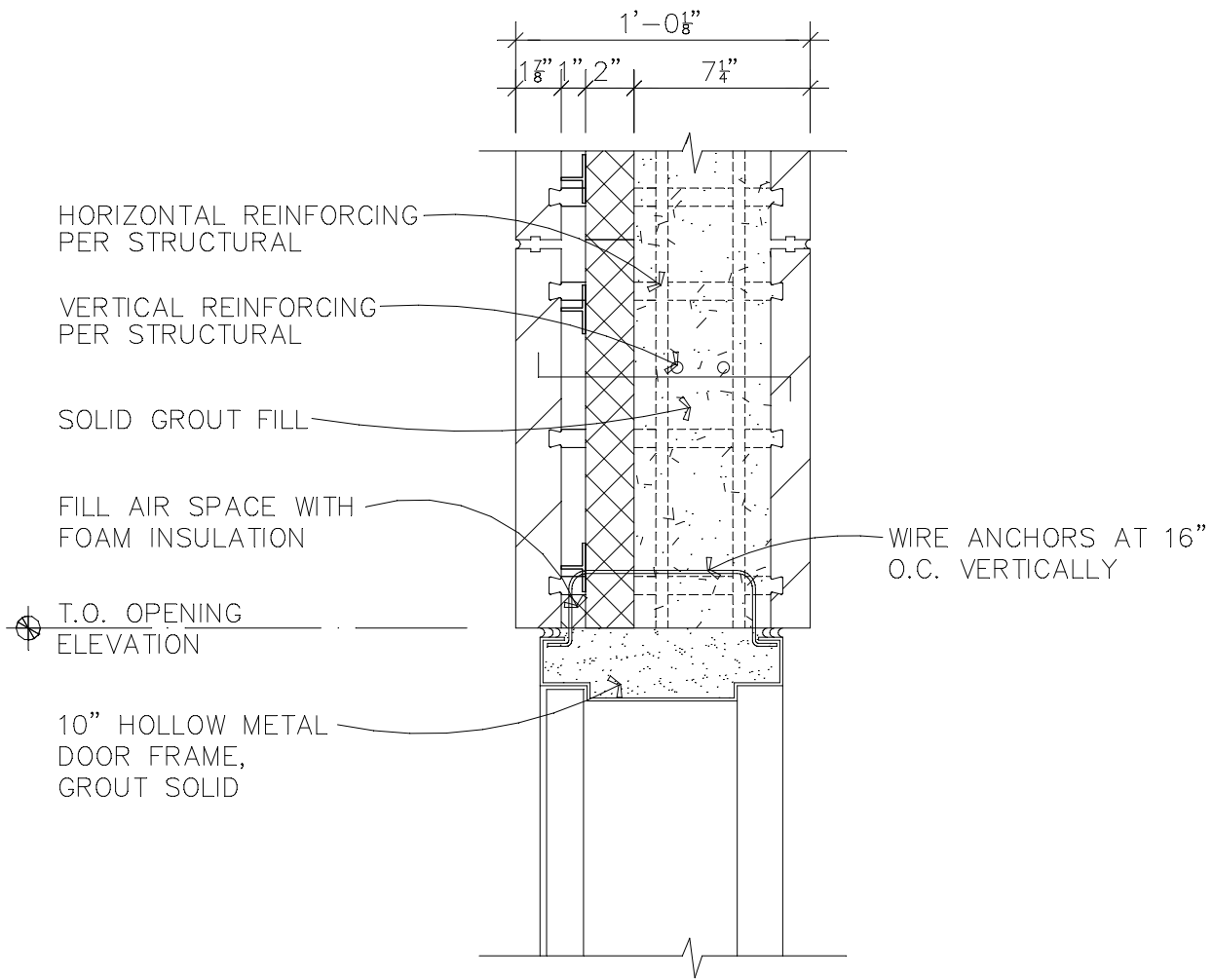


JAMB DETAIL SHOWING TYPICAL CORNER RETURN



1 1/2" = 1'-0"

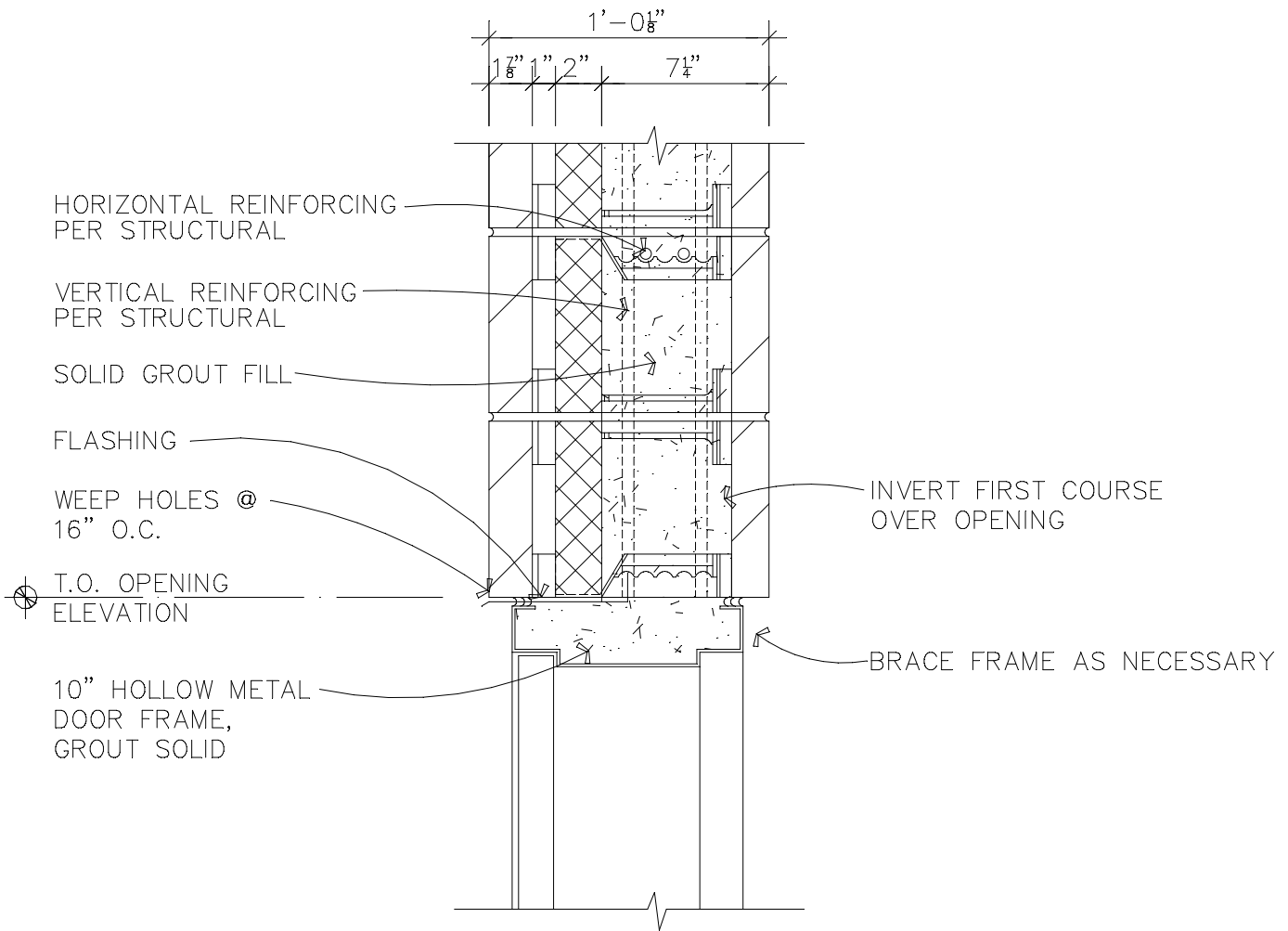
Ref. 013 Rev. 021402



10" DOOR JAMB DETAIL

1 1/2" = 1'-0"

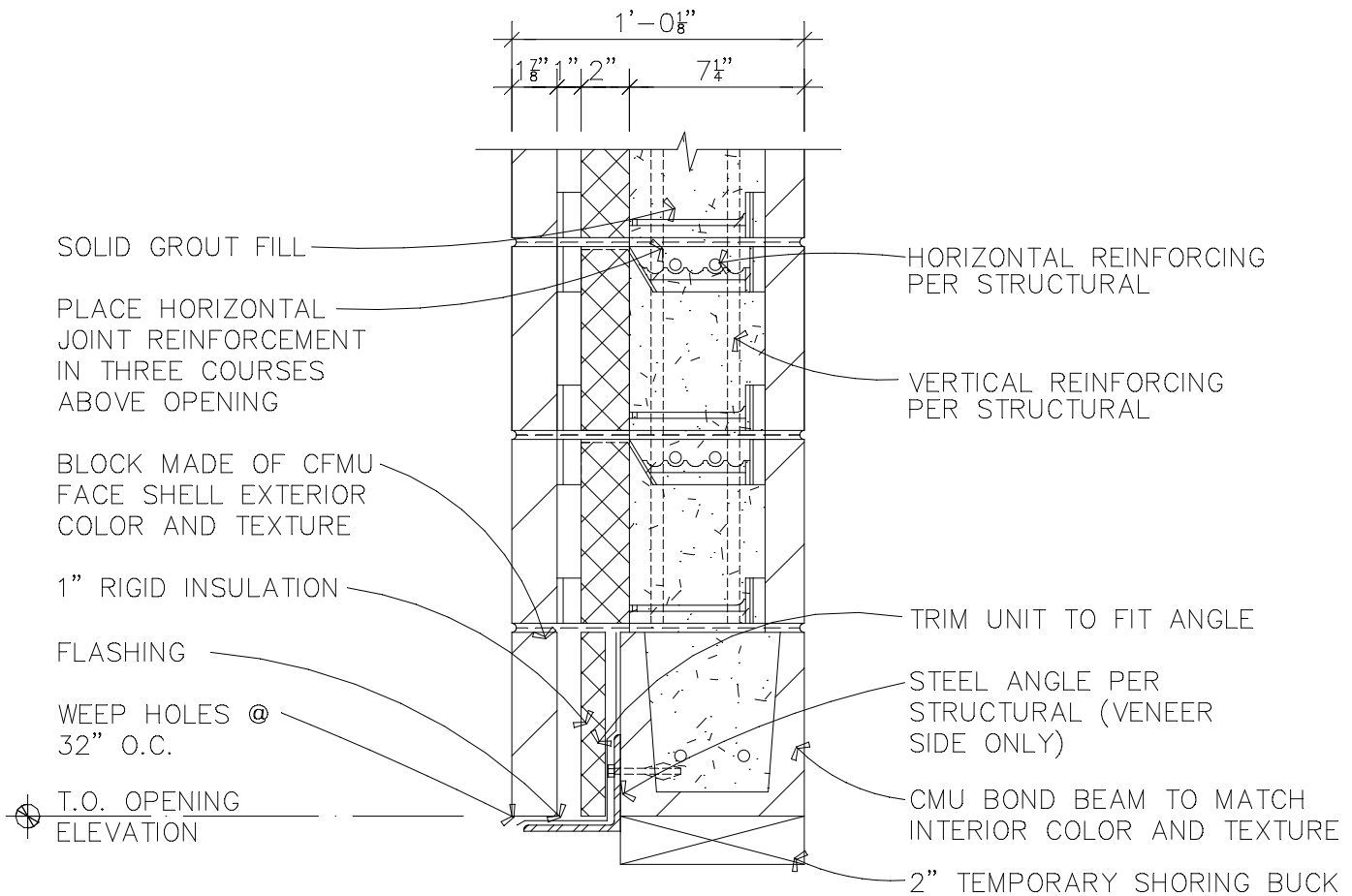
Ref. 014 Rev. 021402



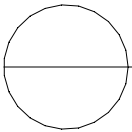
10" DOOR HEAD DETAIL

1 1/2" = 1'-0"

Ref. 015 Rev. 021402

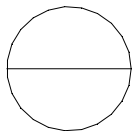
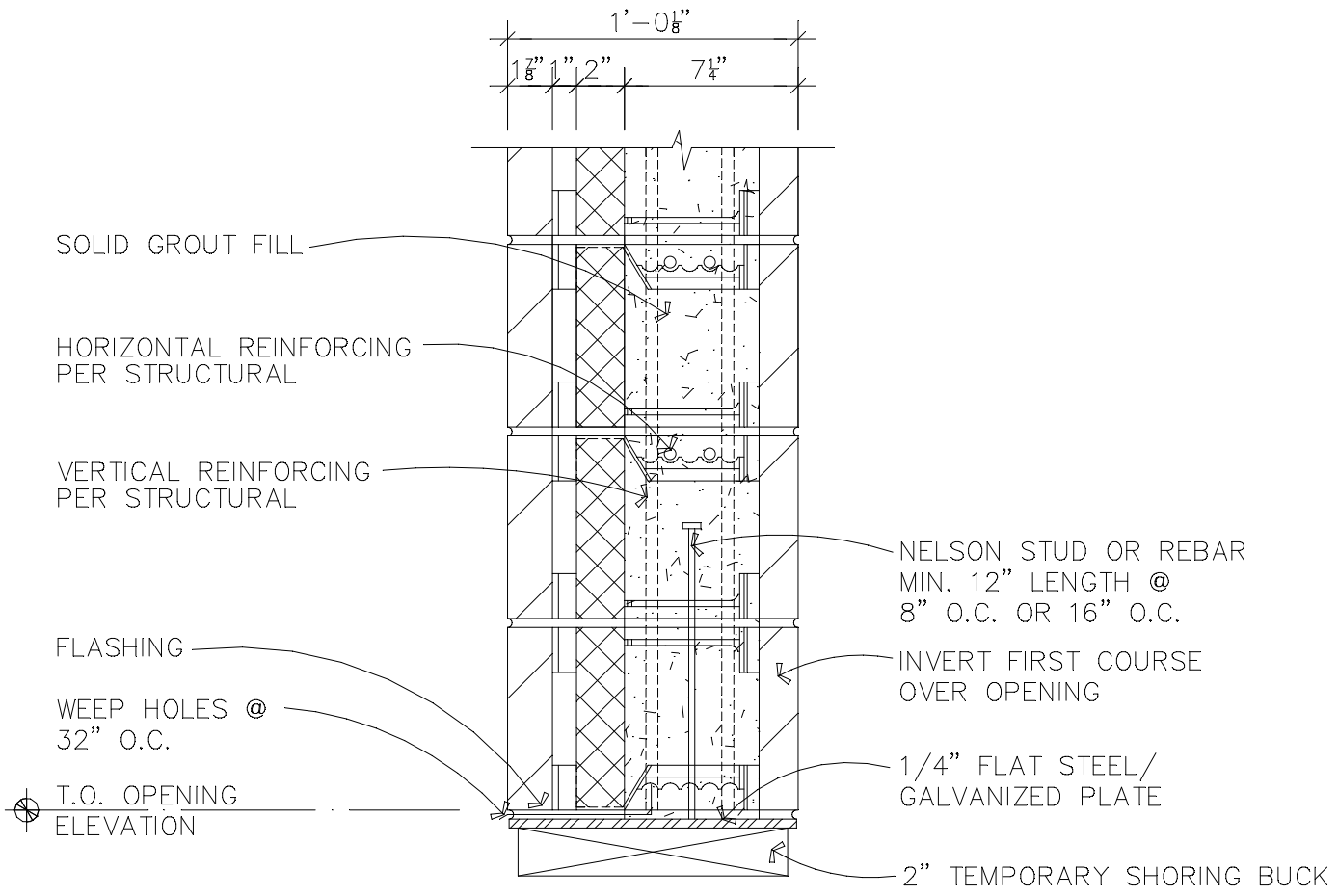


HEAD-FORMED WITH TEMPORARY
WOOD BUCK USING CFMU STRETCHER



1 1/2" = 1'-0"

Ref. 016 Rev. 021402



HEAD-FORMED WITH FLAT STEEL LINTEL

1 1/2"=1'-0"

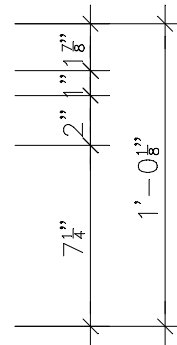
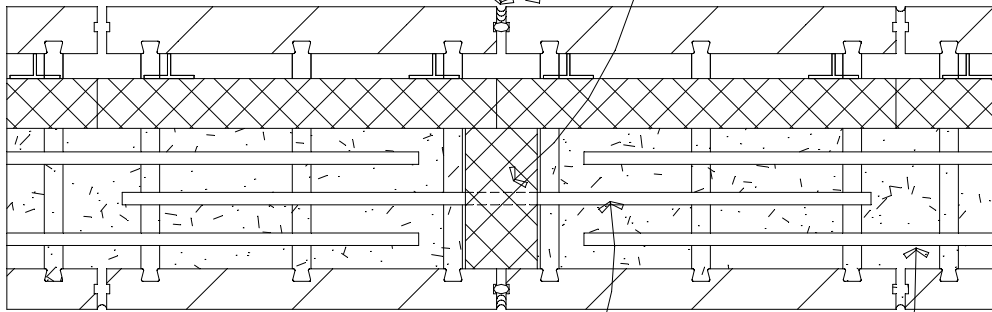
Ref. 017 Rev. 021402

48"X5 1/2" RIGID
INSULATION, PLACED
VERTICALLY, CONTINUOUS
BOTTOM TO TOP OF WALL

DO NOT MORTAR HEAD JOINTS,
IF LAYED IN RUNNING BOND.
CUT CENTER OF BLOCK.
ALTERNATED COURSES

BACKER ROD AND SEALANT,
PLACE BACKER ROD IN
GROOVES IN HEAD JOINT

EXTERIOR



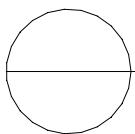
BACKER ROD AND SEALANT,
PLACE BACKER ROD IN
GROOVES IN HEAD JOINT

INTERIOR

1/2"Ø SMOOTH DOWEL ROD,
GREASED AND CAPPED AT ENDS.
PLACED AT 24" O.C. OR 48" O.C.
VERTICALLY

DISCONTINUE HORIZONTAL REBAR
AT EXPANSION JOINTS EXCEPT AT
TOP OF WALL

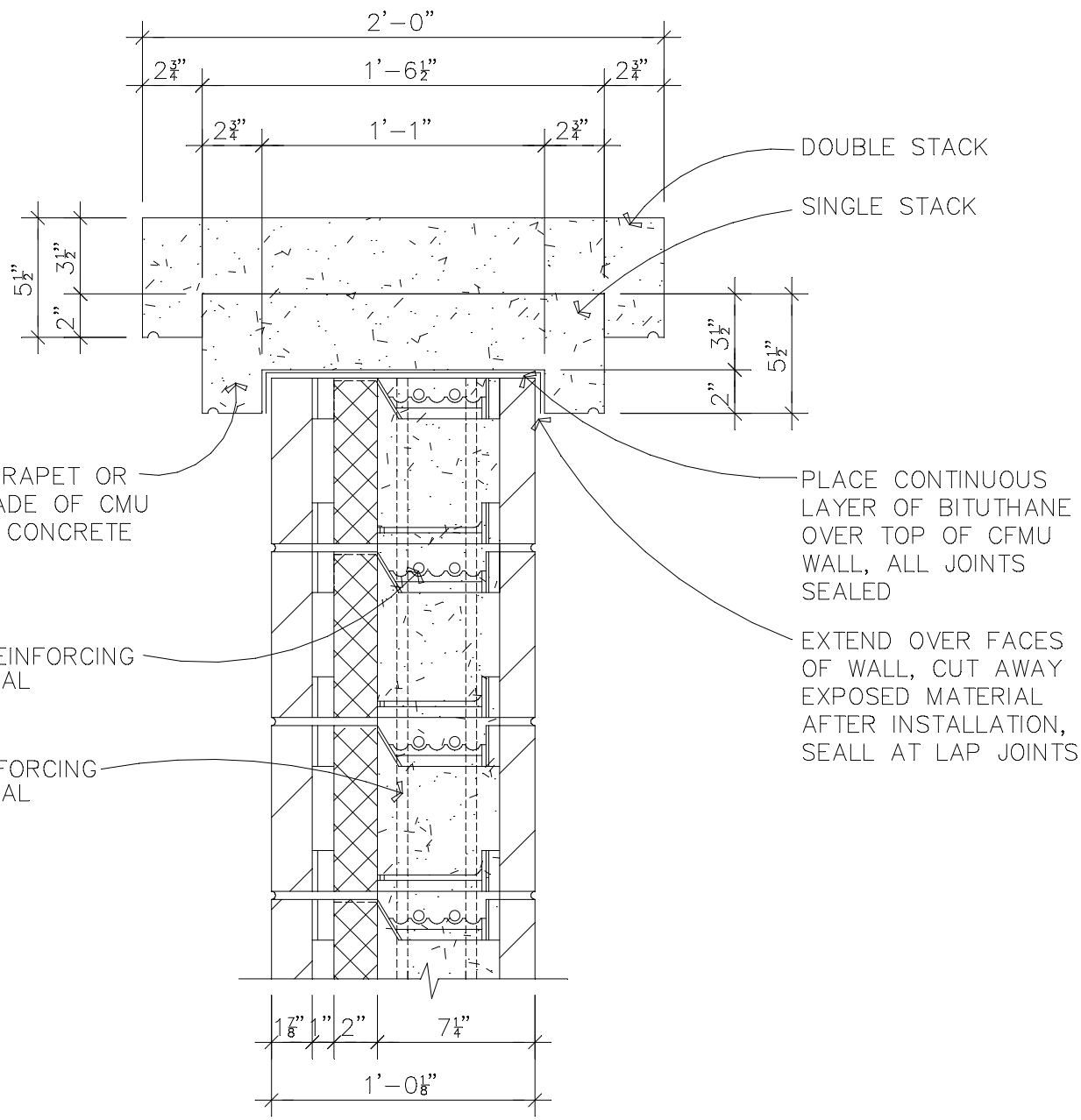
NOTE: RECOMMENDED SPACING 20'-8" O.C. MAXIMUM.



THROUGH WALL EXPANSION JOINT

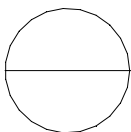
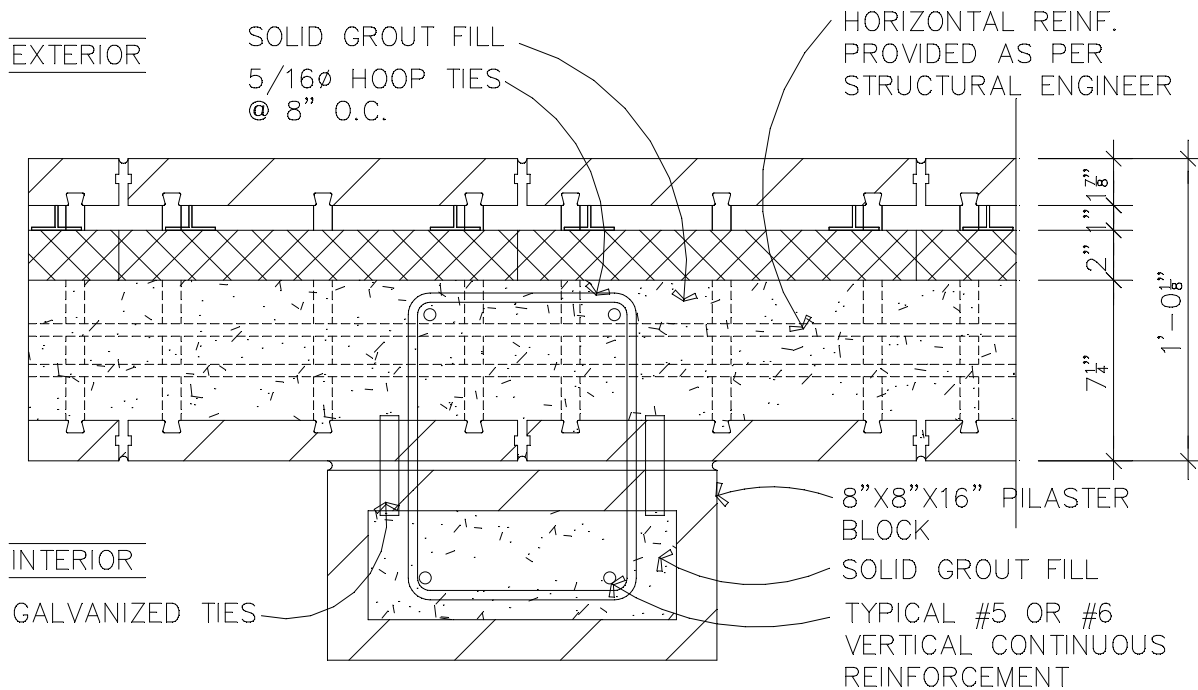
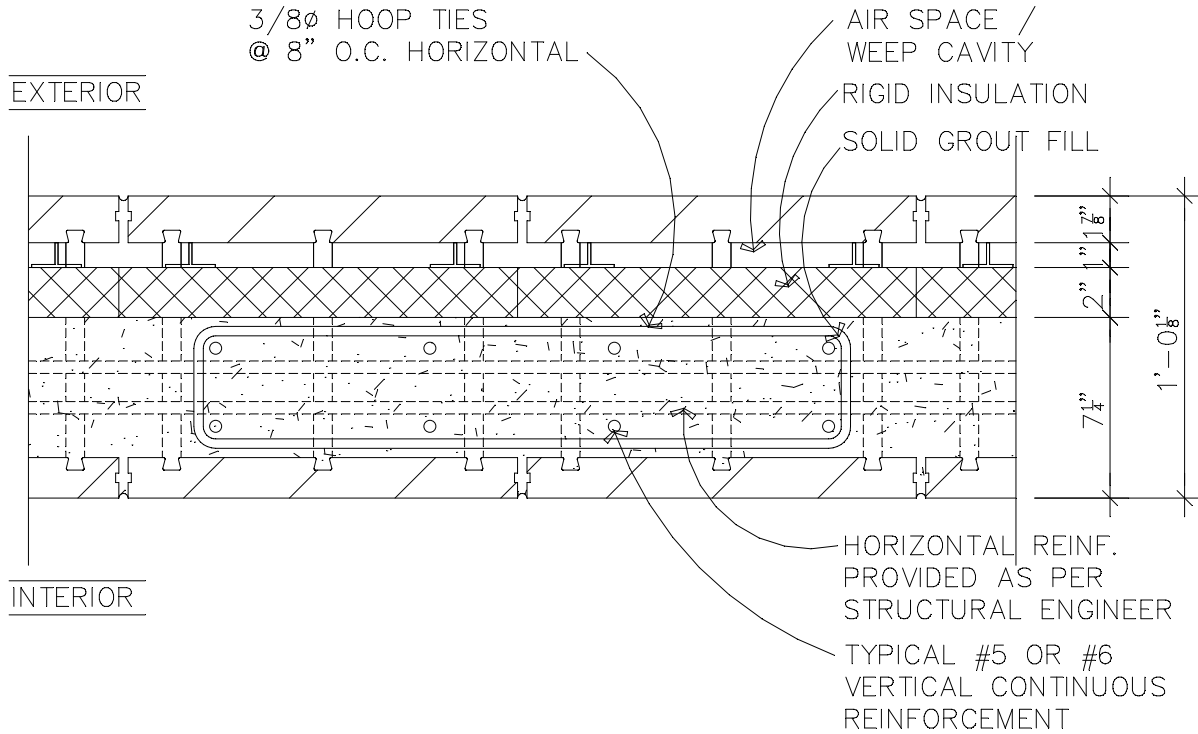
1 1/2"=1'-0"

Ref. 018 Rev. 021402



○ STACKABLE PARAPET DETAIL
 1 1/2" = 1'-0"

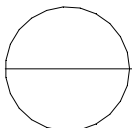
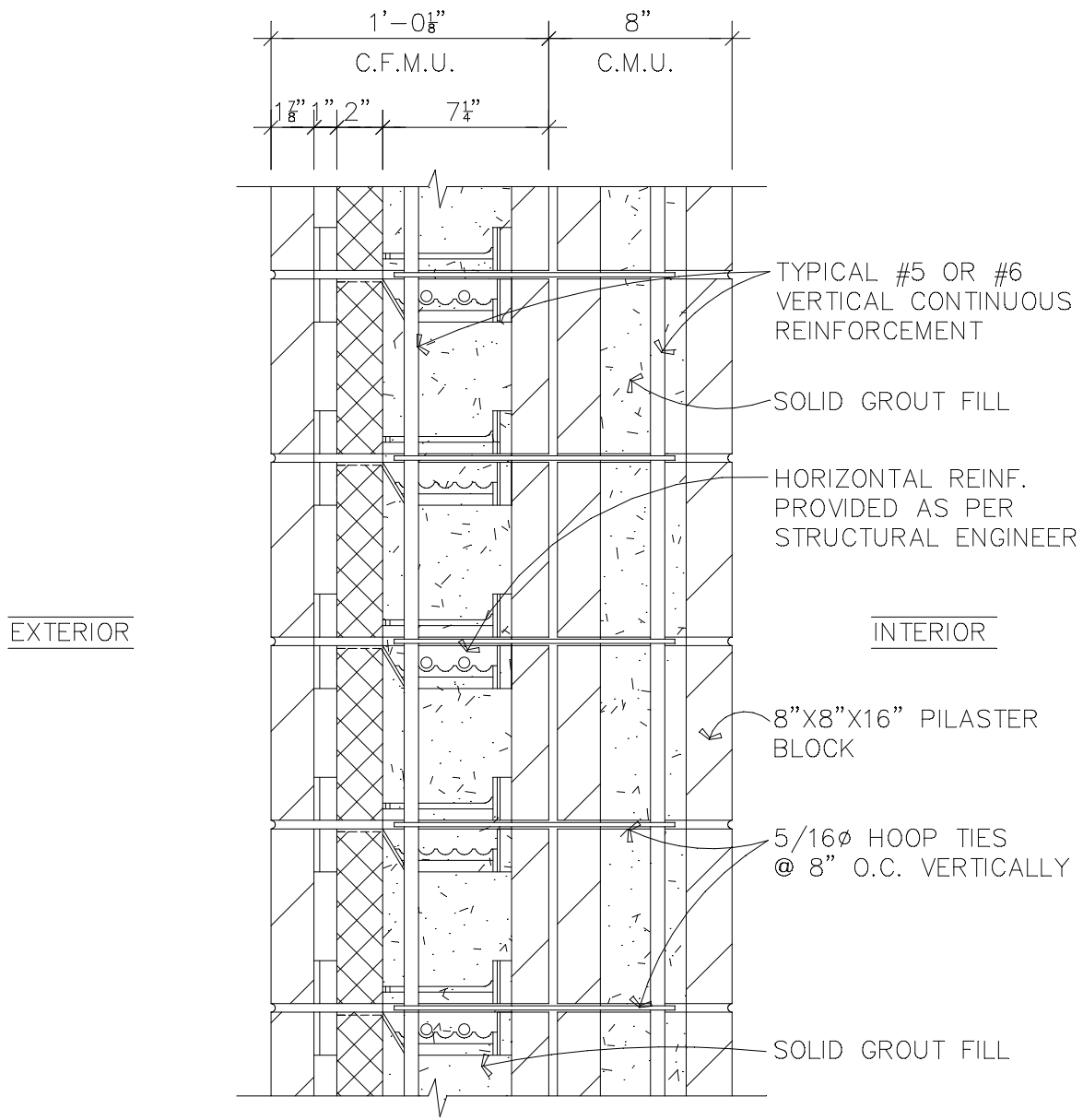
Ref. 019 Rev. 021402



CFMU STRUCTURAL COLUMN DETAIL

1 1/2" = 1'-0"

Ref. 020 Rev. 021402



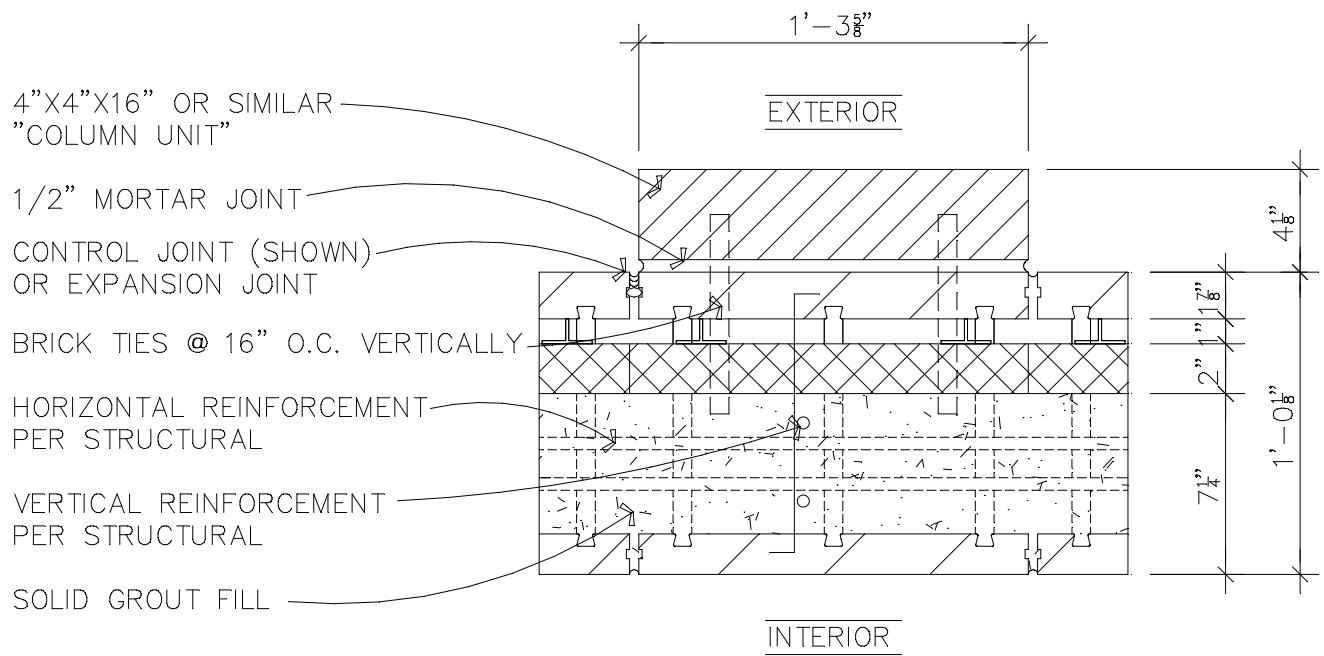
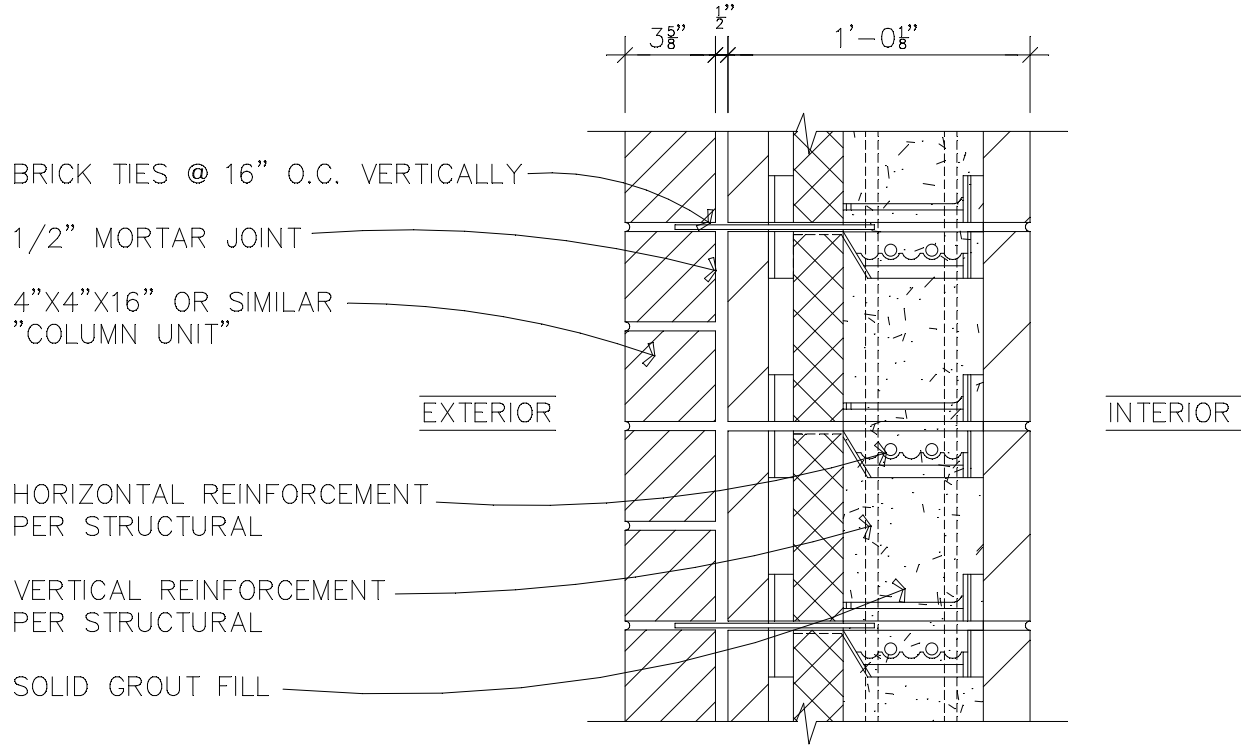
CFMU STRUCTURAL COLUMN SECTION

1 1/2"=1'-0"

Ref. 021 Rev. 021402

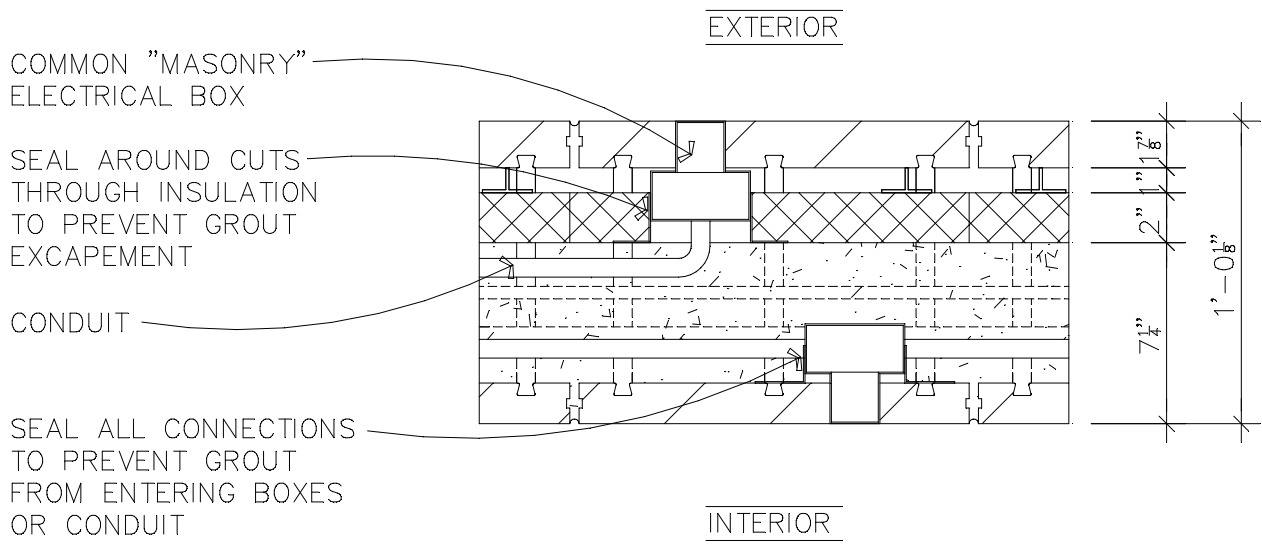
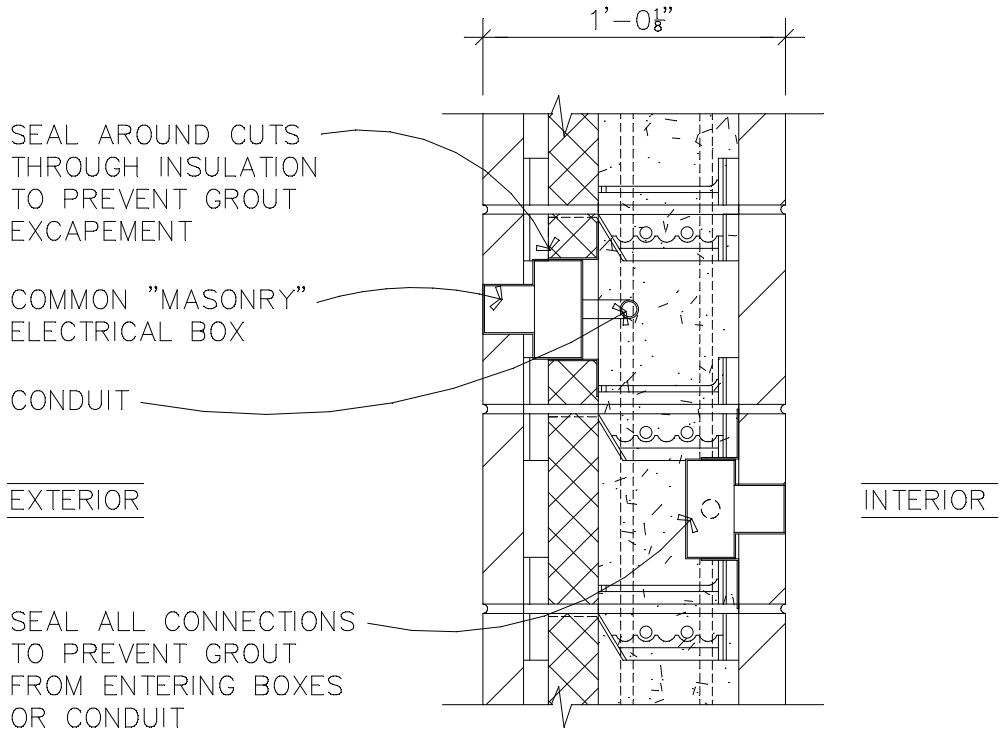
NOTE:

"FALSE COLUMNS" ARE VENEER UNITS LAYED UP AS COLUMNS AGAINST THE CFMU WALL. THESE ARE FOR AESTHETICS ONLY AND ARE NOT STRUCTURAL AND ARE THEREFORE BOUND TO THE CFMU WALL WITH COMMON BRICK TIES AND MORTAR. "FALSE COLUMNS" ARE MORE COMMON AS EXTERIOR ENHANCEMENTS, BUT CAN BE USED ON THE INTERIOR AS WELL. THEY CAN ALSO BE USED TO HIDE TRANSITIONAL CHANGES IN THE WALL COLOR OR TEXTURE AND CAN ALSO EFFECTIVELY CONCEAL CONTROL JOINTS. UNITS USED AS "FALSE COLUMNS" CAN BE BRICK, BLOCK OR STONE AND CAN BE LAYED IN A VARIETY OF LENGTHS AND WIDTHS.



CFMU "FALSE COLUMN" DETAIL

1 1/2" = 1'-0"



○ ELECTRICAL BOX INSTALLATION

1 1/2"=1'-0"

SOLID GROUT FILL

30"X42"X6"
HOSE CABINET

HOLLOW SPACE BEHIND
BUILT-IN MUST BE
FILLED WITH FACE
SHELLS OR INSULATION
PRIOR TO PLACING
BUILT-IN ITEM

EXTERIOR

INTERIOR

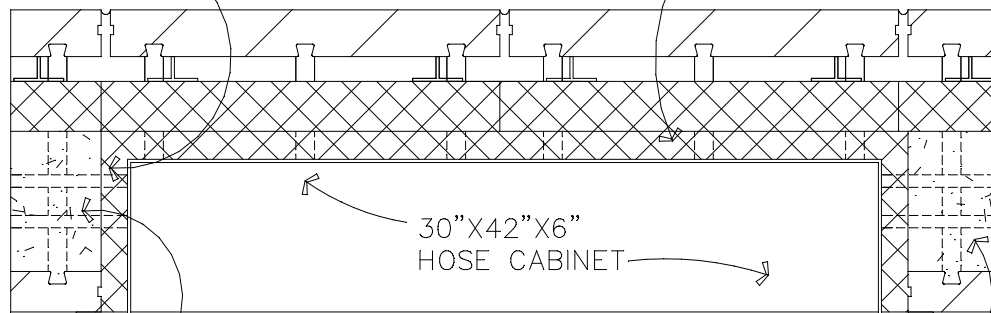
SOLID GROUT FILL

1'-0 $\frac{1}{8}$ "

BLOCK OUT ENTIRE
GROUT CAVITY FOR
BUILT-IN ITEMS

EXTERIOR

HOLLOW SPACE BEHIND BUILT-IN MUST
BE FILLED WITH FACE SHELLS OR
INSULATION PRIOR TO PLACING BUILT-IN
ITEM



30"X42"X6"
HOSE CABINET

1 7/8"
1 7/8"
2"
7 1/4"
1'-0 $\frac{1}{8}$ "

SOLID GROUT
FILL

INTERIOR

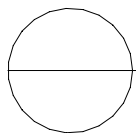
SOLID GROUT
FILL

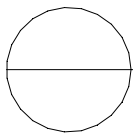
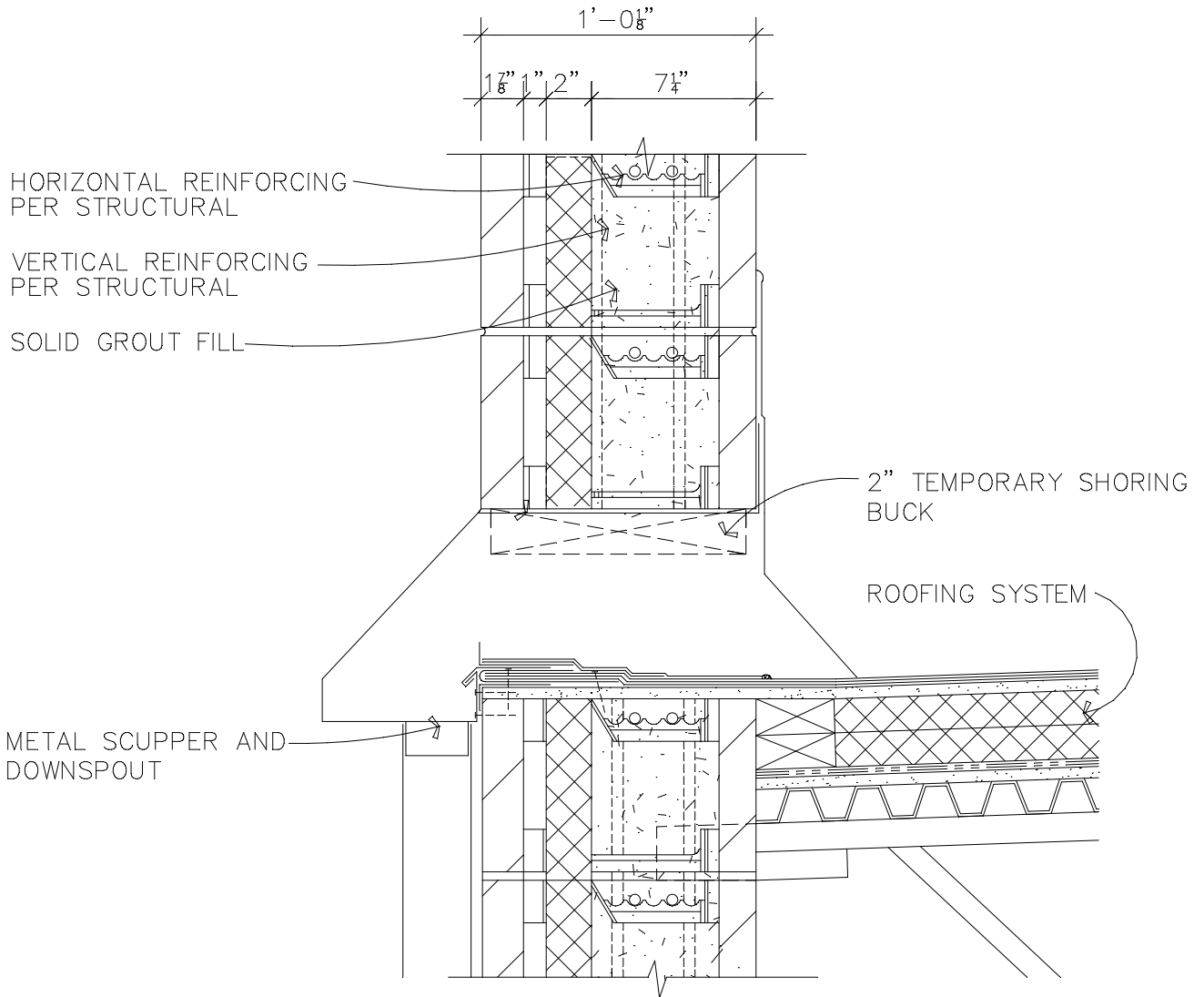
BUILT-IN WALL ITEMS

i.e. DRINKING FOUNTAINS, HOSE CABINETS

1 1/2"=1'-0"

Ref. 024 Rev. 021402





SCUPPER AND DOWNSPOUT DETAIL

1 1/2" = 1'-0"

Ref. 025 Rev. 021402

EXTERIOR

INTERIOR

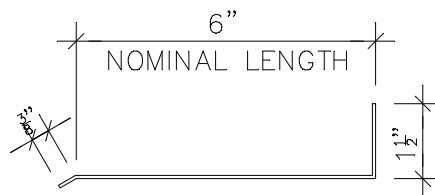
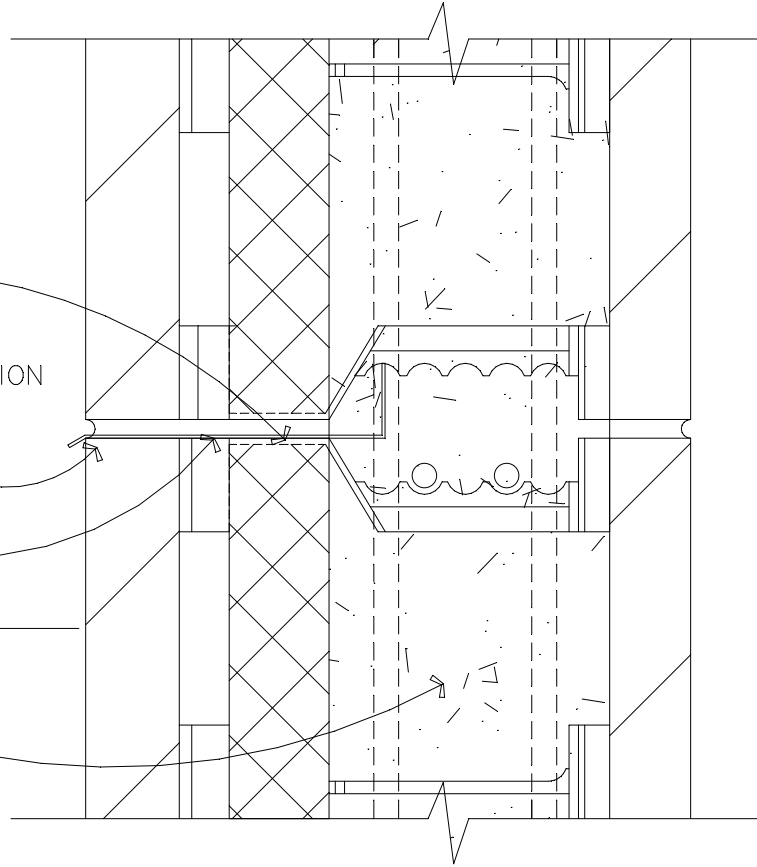
TRIM TOP OF THE
INSULATION AS
REQUIRED FOR
FLASHING INSTALLATION

WEEPS @ 16" O.C.

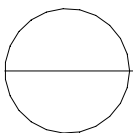
FLASHING

GRADE LEVEL OR
STORY HEIGHT

SOLID GROUT FILL



FLASHING USED OVER
OPENINGS, AT STORY
HEIGHT, SLAB LEVEL, ETC.



FLASHING DETAIL

3"=1'-0"

Ref. 026 Rev. 021402

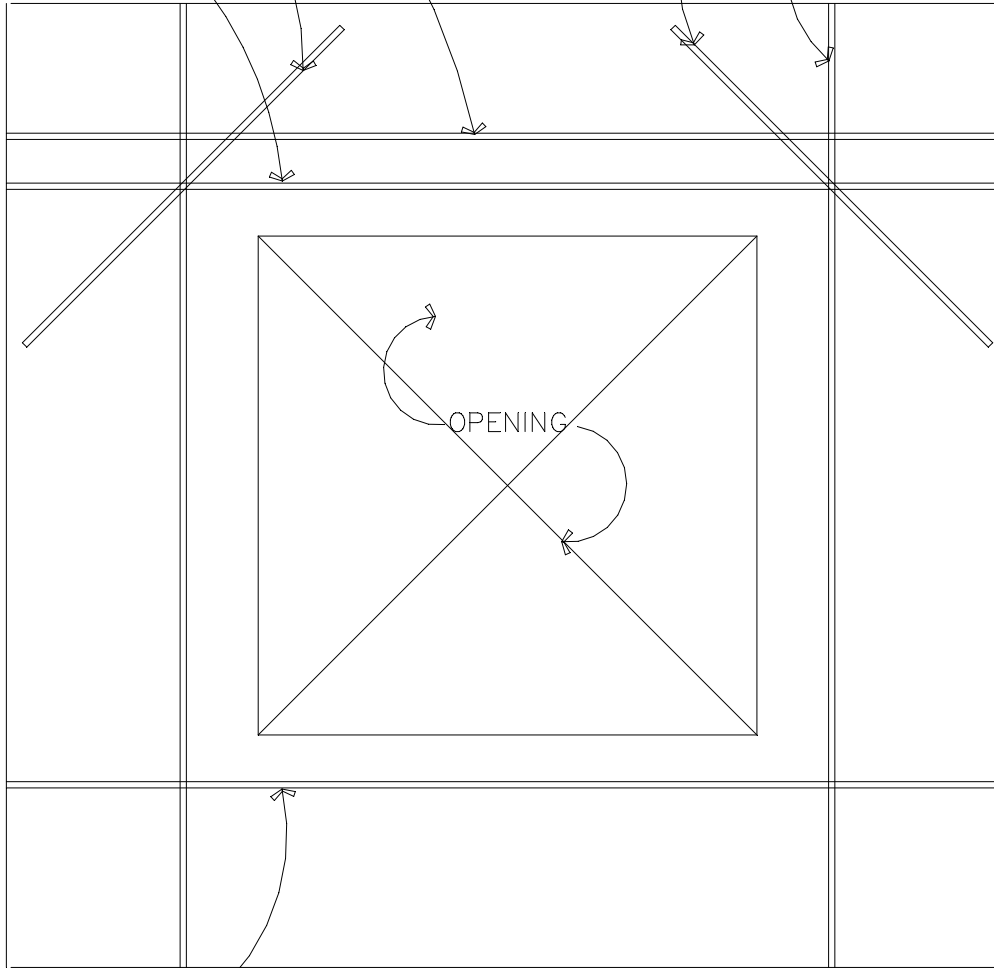
CONTINUOUS HORIZONTAL
REINFORCEMENT

3'-0" MIN. DIAGONAL
REINFORCEMENT

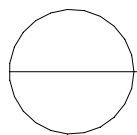
MIN. #5 TOP REBAR.
EXTEND MIN. 24" PAST
EACH SIDE OF OPENING

3'-0" MIN. DIAGONAL
REINFORCEMENT

MIN. (1) #4 VERTICAL
CONTINUOUS REINFORCEMENT
ON EACH SIDE OF OPENING



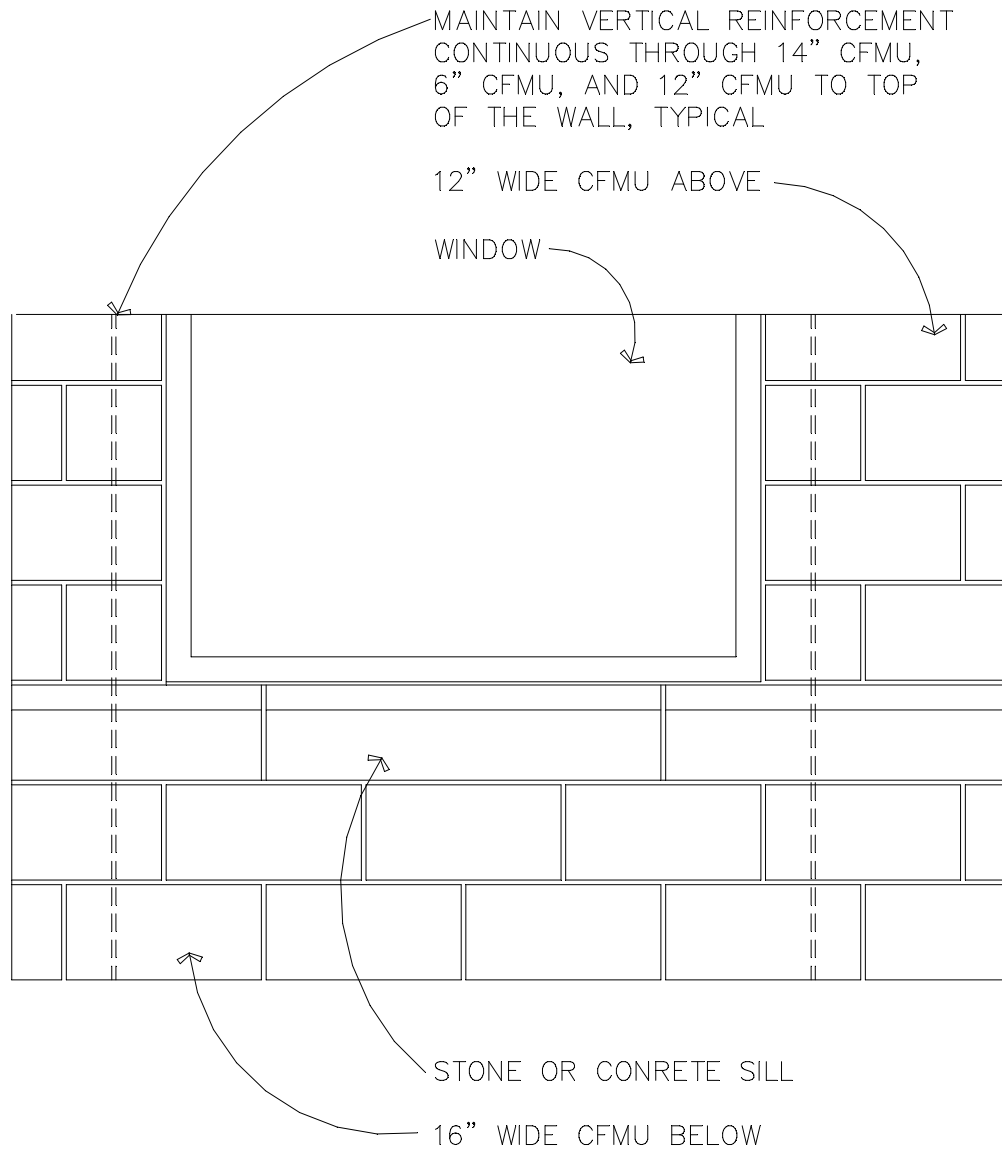
MIN. #4 BOTTOM REBAR.
EXTEND MIN. 24" PAST
EACH SIDE OF OPENING



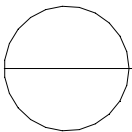
REINFORCING AT OPENINGS

3/4"=1'-0"

Ref. 027 Rev. 021402



ELEVATION OF A WINDOW SILL WITH PRECAST CONCRETE OR STONE

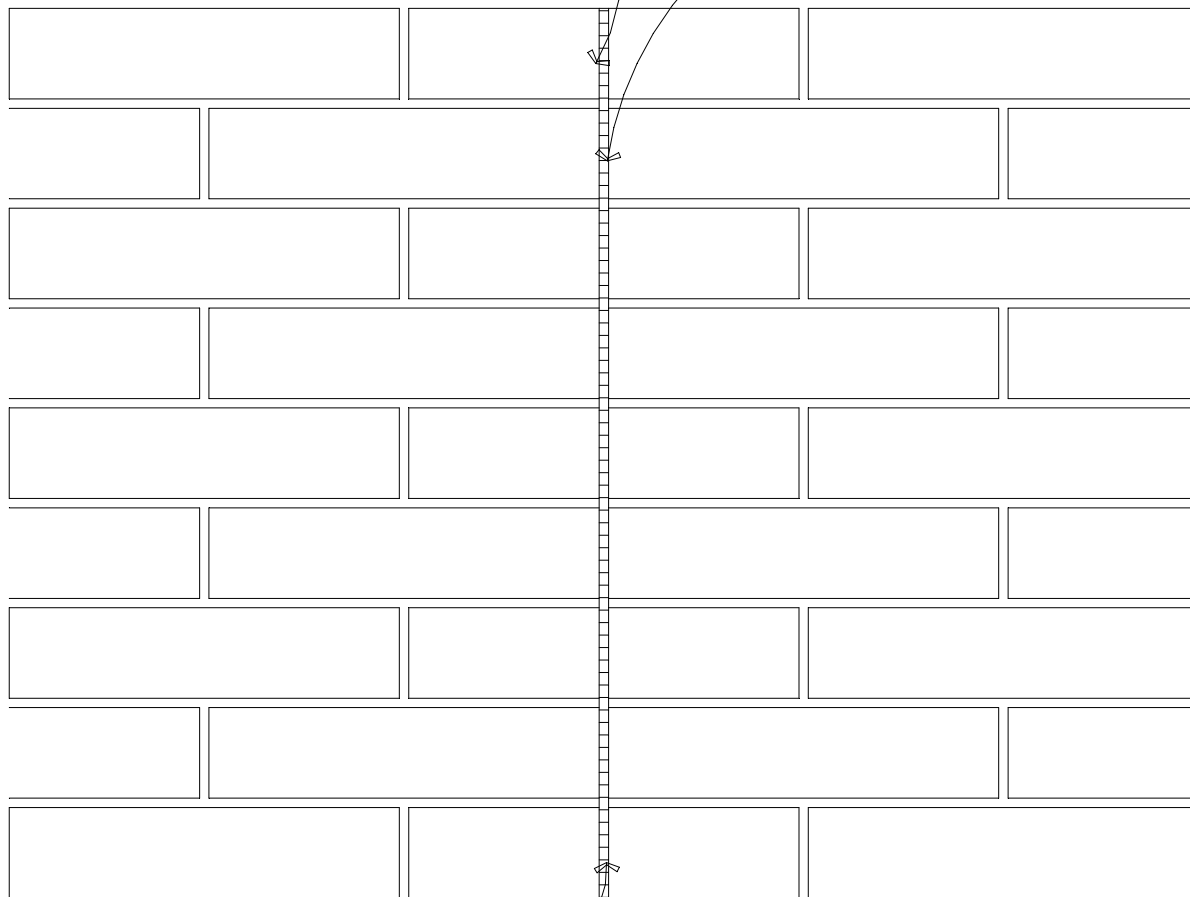


3/4"=1'-0"

Ref. 028 Rev. 021402

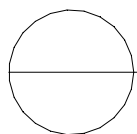
SAW-CUT THROUGH SOLID UNIT
FACES ONCE UNITS ARE WELL
SET, BUT NO LATER THAN 24
HOURS AFTER INSTALLATION.
SAME PROCEDURE FOR 4X16,
4X12 OR 8X16 UNITS

OMIT MORTAR AT ALTERNATE
HEAD JOINTS



TYPICALLY SAW CUT SHOULD BE
MADE LATE AFTERNOON TO BE MOST
EFFECTIVE. LATE DAY UNITS SHOULD
BE CUT FIRST THING IN THE NEXT
MORNING.

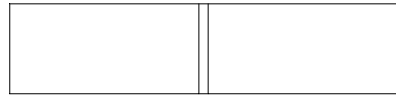
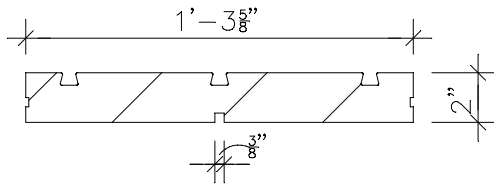
SPACING FOR EXTERIOR CONTROL JOINTS
SHALL BE 20'-8" MAXIMUM FOR BLOCK
AND BRICK SURFACES



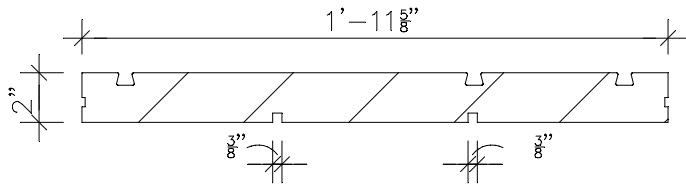
ELEVATION OF A SAW-CUT CONTROL JOINT

1 1/2"=1'-0"

Ref. 029 Rev. 021402

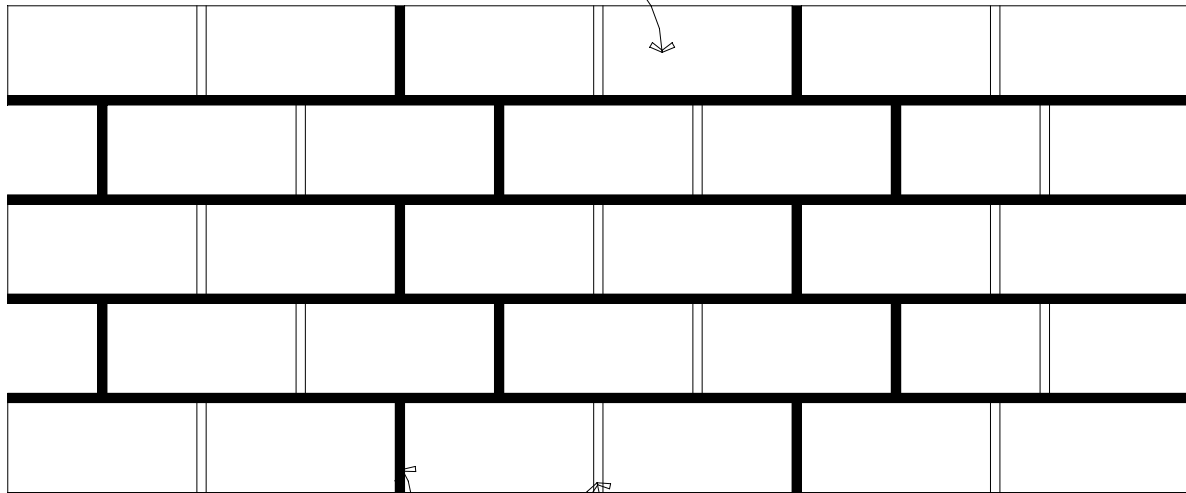


3/8"X3/8" SCORED GROOVE IN
FACE SHELL FOR 16" CFMU



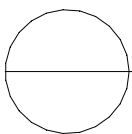
3/8"X3/8" SCORED GROOVE IN
FACE SHELL FOR 24" CFMU

4"X8" BRICK RUNNING BOND LOOK ACHIEVED
BY LAYING SINGLE SCORE CENTER UNITS
4"X16" IN QUARTER BOND PATTERN



ACTUAL MORTAR JOINTS

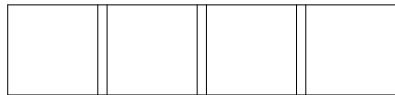
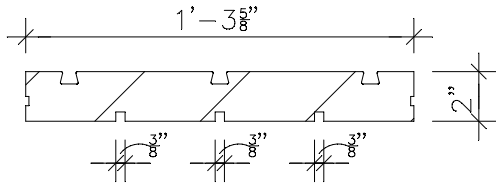
SCORED GROOVES IN FACE SHELL



RUNNING BOND

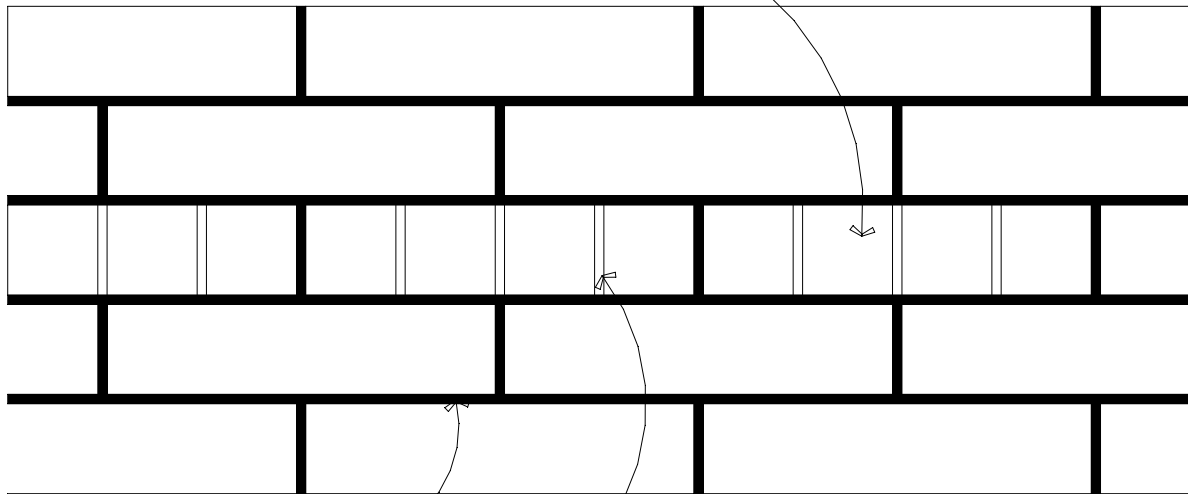
1 1/2"=1'-0"

Ref. 030 Rev. 021402



3/8"X3/8" SCORED GROOVE IN
FACE SHELL FOR 16" CFMU

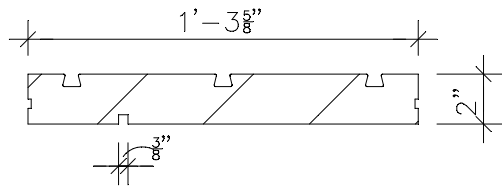
TRIPLE SCORED 4"X16" UNITS LAYED EVER
SIXTH BOND



ACTUAL MORTAR JOINTS

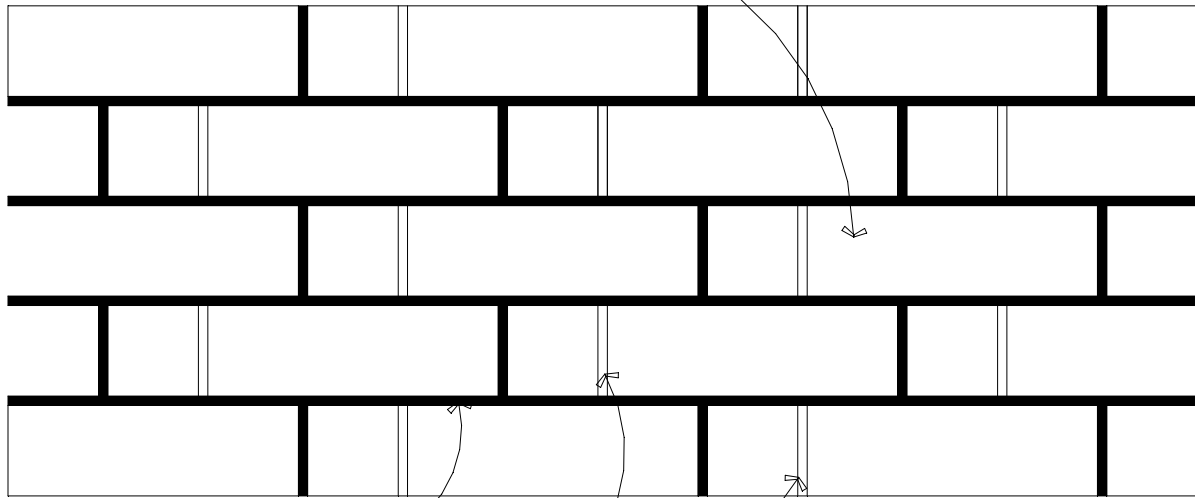
SCORED GROOVES IN FACE SHELL

COMMON BOND
1 1/2"=1'-0"



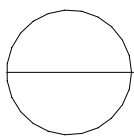
3/8"X3/8" SCORED GROOVE IN
FACE SHELL FOR 16" CFMU

QUARTER SCORED 4"X16" UNITS LAYED
RUNNING BOND



ACTUAL MORTAR JOINTS

SCORED GROOVES IN FACE SHELL



FLEMISH BOND

1 1/2"=1'-0"

Ref. 032 Rev. 021402