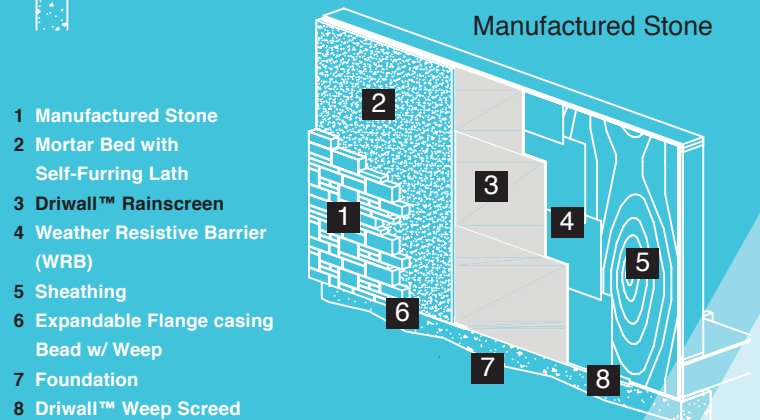
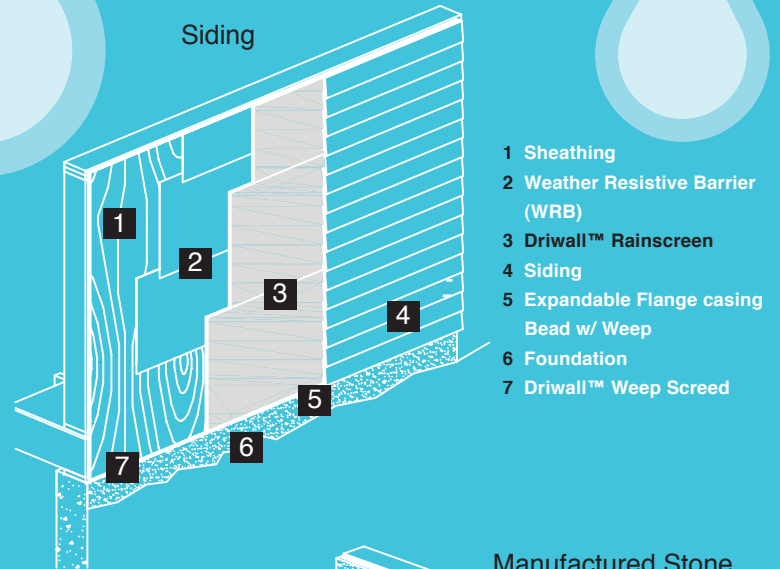




## Driwall™ Rainscreen Products

Driwall™ Rainscreen is a ventilation mat designed to eliminate moisture & moisture vapor in masonry & other siding & roofing applications. Driwall™ Rainscreen is a full wall product that separates veneer from backup walls allowing moisture to drain out of the wall. The air space that is provided by Driwall™ Rainscreen helps air flow through the wall cavity, keeping it dry. Depending on the size of the cavity desired, Driwall™ Rainscreen may be specified from a 0.25” thickness to 1.6” thickness.

Try Driwall™ Rainscreen in your next project!



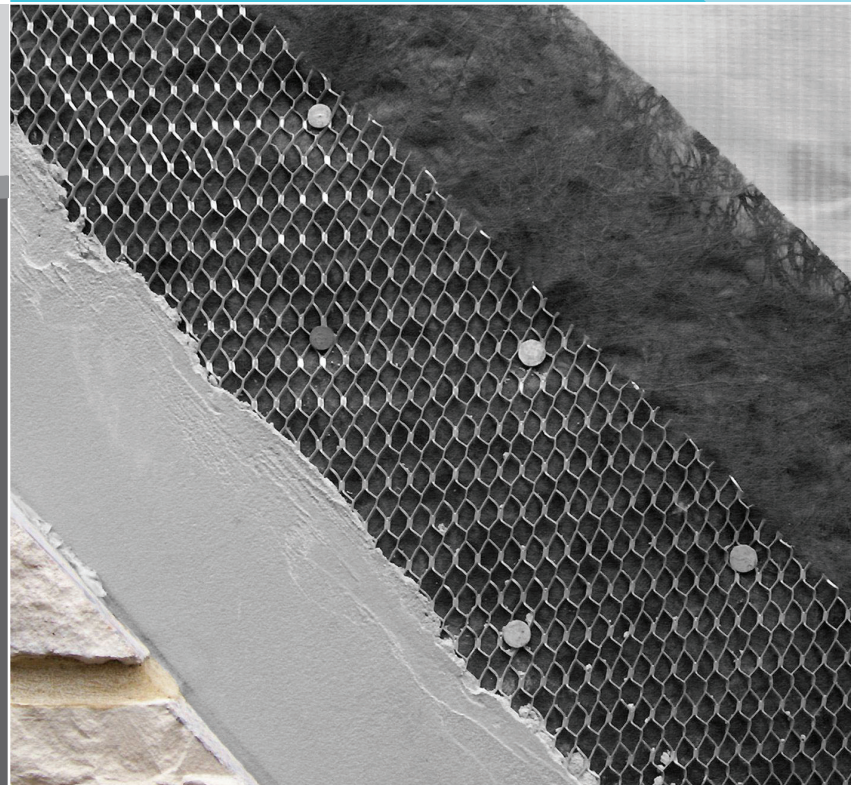
✓ Most effective way to drain & vent.

## Benefits

- ✓ LEED® credits available.
- ✓ Prevents callbacks from moisture problems.
- ✓ Increases ventilation.
- ✓ Helps prevent mold.
- ✓ Most effective way to drain & vent.
- ✓ One product that can do it all.



*Left to Right:  
Manufactured Stone, Scratch Coat,  
Wire Lath, Driwall™ Rainscreen,  
& Building Paper*





## Driwall™ Rainscreen Products

| Product                         | Thickness         | Length | Area        | Roll Dimension | Roll Weight | Applications          |
|---------------------------------|-------------------|--------|-------------|----------------|-------------|-----------------------|
| <b>Driwall Rainscreen 020-1</b> | 0.25 in./6.0 mm.  | 65 ft. | 260 sq. ft. | 16x16x48 in.   | 26 lbs.     | See Below             |
| <b>Driwall Rainscreen 10 mm</b> | 0.40 in./10.9 mm. | 45 ft. | 180 sq. ft. | 16x16x48 in.   | 24 lbs.     | See Below             |
| <b>Driwall Rainscreen 075-1</b> | 0.75 in./19.0 mm. | 50 ft. | 200 sq. ft. | 18x18x48 in.   | 29 lbs.     | Brick & Natural Stone |

For a complete list of all our products please contact KBP or visit our website at [www.KeeneBuilding.com](http://www.KeeneBuilding.com)

### Applications

- ✓ Stucco.
- ✓ Thin stone or brick.
- ✓ Manufactured stone.
- ✓ Stone & brick masonry
- ✓ Lap siding.
- ✓ Siding applications.
- ✓ Roofing applications.

### Eliminate One Layer of Building Paper

- ✓ **IRC 2006 Code Book\***
- ✓ **R703.6.3 Water-resistive Barriers.** Water-resistive barriers shall be installed as required in Section R703.2 &, where applied over wood-based sheathing, shall include a water-resistive vapor-permeable barrier with a performance at least equivalent to two layers of Grade D paper.
- ✓ **Exception:** Where the water-resistive barrier that is applied over wood-based sheathing has a water resistance equal to or greater than that of 60 minute Grade D paper & is separated from the stucco by an intervening, substantially non water-absorbing layer or designed drainage space.



P.O. Box 241353

Mayfield Heights, OH 44124

[Info@KeeneBuilding.com](mailto:Info@KeeneBuilding.com)

[www.KeeneBuilding.com](http://www.KeeneBuilding.com)

877 | 514 | 5336

P 440 | 605 | 1020

F 440 | 605 | 1120